

VANCOUVER INTERNATIONAL BOAT SHOW

February 1 – 5, 2023
BC Place & Granville Island
Vancouver, BC

Dear Exhibitor,

Levy Show Service Inc. is pleased to be appointed by Show Management as the Official General Service Contractor for the **VANCOUVER INTERNATIONAL BOAT SHOW**. We are excited to service you for this event. In the following pages, please find the necessary forms and vital information that will assist you with a successful exhibition experience.

We are offering a special discount rate on many of our services. To receive the discount rate, please submit your completed forms with full payment by **January 11, 2023**.

Should you have any questions, please feel free to contact our Customer Service Department at 604 277 1726 or operations@levyshow.com. Our team is readily available to assist you with your needs.

We look forward to speaking with you and wish you have a smooth and successful **VANCOUVER INTERNATIONAL BOAT SHOW**.

Levy Show Service Inc.

PAYMENT & CREDIT CARD CHARGE AUTHORIZATION FORM

COMPANY				BOOTH NUMBER			
ADDRESS		street	city	state/province	zip/postal code	country	
PHONE	FAX	P/O Number		E-MAIL			
AUTHORIZED CONTACT SIGNATURE X				AUTHORIZED CONTACT - PLEASE PRINT		DATE	

All orders are regulated by LSS Payment Terms & Conditions as well as Material Handling / Exhibit Transportation Terms & Conditions.

PAYMENT INFORMATION

<input type="checkbox"/> VISA		<input type="checkbox"/> MASTERCARD		<input type="checkbox"/> CHEQUE		EXPIRY DATE		CCVC	
ACCOUNT NUMBER									
CARDHOLDER'S BILLING ADDRESS		city		state/province		zip/postal code		country	
CARDHOLDER'S SIGNATURE X		CARDHOLDER'S NAME - PLEASE PRINT							

Please complete the REQUIRED order forms and submit with Payment & Credit Card Authorization Form and full payment. You may choose to pay by credit card and/or bank cheque, however, *we require your credit card authorization to be on file with LSS.* For your convenience, this form will be used as your authorization to charge any additional amounts incurred by you or your show representative, including material handling and labour charges.

CALCULATION OF ORDER FORMS

TOTAL FROM EACH ORDER FORM

Material Handling Order Form.....	\$	
Exhibitor Special Rental Order Form.....	\$	
Bulk Carpet Special Rental Order Form.....	\$	
Carpet, Flooring & Drape Rental Order Form.....	\$	
Table and Seating Rental Order Form.....	\$	
Accessories Rental Order Form.....	\$	
Prestige Furniture Rental Order Form.....	\$	
Hardwall System Rental Order Form.....	\$	
Graphics and Sign Rental Order Form.....	\$	
Plant & Flower Rental Order Form.....	\$	
Audio Visual & Computer Rental Order Form.....	\$	
Labour Order Form & Invoice.....	\$	
Other LSS Services.....	\$	

FULL PAYMENT IN CANADIAN FUNDS

To simplify payment, send one cheque payable to Levy Show Service Inc. for the entire amount or note the amount to be charged to your credit card.

Charge my credit card in the amount of	\$	
Cheque no. <input type="text"/>	Dated <input type="text"/>	in the amount of \$ <input type="text"/>



MATERIAL HANDLING FAQs

The following is a list of frequently asked questions pertaining to material handling and freight services. We strongly recommend that you read this document in its entirety to better familiarize yourself with the processes relating to material handling and freight services.

As the official service contractor, LEVY is the exclusive provider of freight services. Material handling includes unloading your exhibit material, storing up to 30 days in advance at the warehouse address, delivering to the booth, the handling of empty containers to and from storage, and removing of material from the booth for reloading onto outbound carriers. It should not be confused with the cost to transport your exhibit material to and from the convention or event. You have two options for shipping your advance freight — either to the warehouse or directly to show site.

HOW DO I SHIP TO THE ADVANCE WAREHOUSE?

- We will accept freight beginning 30 days prior to show move-in.
- To check on your freight arrival, call Exhibitor Services at the number listed on the Quick Facts.
- To ensure timely arrival of your materials at show site, freight should arrive by the deadline date listed on the Quick Facts and Shipping Instructions pages. Your freight will still be received after the deadline date, but additional charges will be incurred.
- The warehouse will receive shipments Monday through Friday, except holidays. Refer to the Shipping Instructions page for warehouse receiving hours.
- The warehouse will accept crates, cartons, skids, trunks/cases and carpets. Loose or pad-wrapped materials must be sent directly to show site.
- All shipments must have a bill of lading or delivery slip indicating the number of pieces, type of merchandise and weight.
- Certified weight tickets must accompany all shipments.
- Warehouse freight will be delivered to the booth prior to exhibitor setup.
- Please call the number located on the Quick Facts if you want to ship oversized material that requires special equipment to the warehouse.

HOW DO I SHIP TO SHOW SITE?

- Freight will be accepted only during exhibitor move-in. Please refer to the Quick Facts for the specific exhibitor move-in dates and times.
- All shipments must have a bill of lading or delivery slip indicating the number of pieces, type of merchandise and weight.
- Certified weight tickets must accompany all shipments.

WHAT ABOUT PREPAID OR COLLECT SHIPPING CHARGES?

- Collect shipments will be returned to the delivery carrier.
- To ensure that your freight does not arrive “collect,” mark your bill of lading “prepaid.”
- “Prepaid” designates that the transportation charges will be paid by the exhibitor or a third party.

HOW SHOULD I LABEL MY FREIGHT?

- The label should contain the exhibiting company name, the booth number and the name of the event.
- The specific shipping address for either the warehouse or show site can be found on the Quick Facts and Shipping Instructions pages.

HOW DO I ESTIMATE MY MATERIAL HANDLING CHARGES?

- Charges will be based on the weight of your shipment. Each shipment received is considered separately. The shipment weight will be multiplied by the applicable per pound rate with no round-ups. All shipments are subject to reweigh.
- On the Order Form, select whether the freight will arrive at the warehouse or be sent directly to show site.

Crated: material that is skidded or is in any type of shipping container that can be unloaded at the dock with no additional handling required.

- Add the late delivery charge listed on the Order Form if the shipment is accepted at the warehouse or at show site after the deadline date listed on the Quick Facts and Shipping Instructions pages.
- The above services, whether used completely or in part, are offered as a package and the charges will be based on the total inbound weight of the shipment.
- Shipments received without receipts or freight bills, such as UPS and Federal Express, will be delivered to the booth without guarantee of piece count or condition.

WHAT HAPPENS TO MY EMPTY CONTAINERS DURING THE SHOW?

- Pick up “Empty Labels” at the Service Center. Place a label on each container. Labeled containers will be picked up periodically and stored in non-accessible storage during the show.
- At the close of the show, the empty containers will be returned to the booth in random order. Depending on the size of the show, this process may take several hours.
- *Please note that LEVY will assume no liability for interrupted travel plans due to the length of time required for the empty container return. It is the responsibility of the exhibitor to schedule travel plans accordingly.*

HOW DO I PROTECT MY MATERIALS AFTER THEY ARE DELIVERED TO THE SHOW OR BEFORE THEY ARE PICKED UP AFTER THE SHOW?

- Consistent with trade show industry practices, there may be a lapse of time between the delivery of your shipment(s) to your booth and your arrival. The same is true for the outbound phase of the show — the time between your departure and the actual pick-up of your materials. During these times, your materials will be left unattended. We recommend that you arrange for a representative to stay with your materials or that you hire security services to safeguard your materials.

HOW DO I SHIP MY MATERIALS AFTER THE CLOSE OF THE SHOW?

- Each shipment must have a completed Material Handling Agreement in order to ship materials from the show. All pieces must be labeled individually.
- To save time, complete and submit the Outbound Shipping Form in advance, or you may contact the Service Center at show site for your shipping documents. The Material Handling Agreement and labels will be processed and available prior to show closing.
- After materials are packed, labeled, and ready to be shipped, the completed Material Handling Agreement must be turned in at the Service Center.
- Call your designated carrier with pick-up information. Please refer to the Quick Facts and Shipping Instructions pages for specific dates and times. In the event your selected carrier fails to show on final move-out day, your shipment will either be rerouted to LEVY's carrier choice or delivered back to the warehouse at exhibitor's expense.
- For your convenience, show-recommended carriers will be on site to handle outbound transportation.

WHERE DO I GET A FORKLIFT?

- Forklift orders to install or dismantle your booth after materials are delivered may be ordered in advance or at show site. We recommend that you order in advance to avoid additional charges at show site. Refer to the Order Form for available equipment.
- Advance and show-site orders for equipment and labor will be dispatched once a company representative signs the labor order at the Service Center.
- Start time is guaranteed only when equipment is requested for the start of the working day.

DO I NEED INSURANCE?

- Be sure your materials are insured from the time they leave your firm until they are returned after the show. It is suggested that exhibitors arrange all-risk coverage. This can be done by riders to your existing policies.
- All materials handled by LEVY are subject to the enclosed Terms and Conditions.

OTHER AVAILABLE SERVICES (may not be available in all locations)

- Cranes
- Scissor lifts, condors
- Access storage at show site
- Exhibit transportation services (see enclosed Liberty Convention Freight form)
- Security storage at show site
- Short-term and long-term warehouse storage
- Local pick-up and delivery

SOLO RATE MATERIAL HANDLING ORDER FORM & INVOICE

SOLO RATE MATERIAL HANDLING SERVICES

DUE TO LIMITED MATERIAL HANDLING SERVICES AT BC PLACE & GRANVILLE ISLAND, WE HIGHLY RECOMMEND THAT ALL MATERIALS BE SHIPPED TO OUR ADVANCE WAREHOUSE IN ORDER TO AVOID POTENTIAL DELAYS IN UNLOADING AT SHOW SITE.

Material Handling Service:

Levy Show Service Inc. is the exclusive provider of Solo Rate Material Handling Services for the VANCOUVER INTERNATIONAL BOAT SHOW. Solo Rate Material Handling Services include:

- receiving and unloading your exhibit materials at the advance warehouse
- storage of exhibit materials for up to 30 days prior to the show
- transportation to show site, unloading and delivery of exhibit materials to your booth space,
- removal and storage of your empty containers during the event
- return of your empty containers at the close of the event
- outbound loading of your materials onto your carrier vehicle of choice at show site

SOLO RATE MATERIAL HANDLING DESCRIPTIONS

Normal Warehouse Hours for Receiving Freight: 8:00 A.M. to 3:00 P.M. Monday through Friday, Holidays excluded.

Advance Receiving: Shipment(s) received at the Advance Warehouse *between* **December 28, 2022** and **January 25, 2023**.

Early/Late to Warehouse: Shipment(s) received at the Advance Warehouse *prior too* **December 28, 2022** or *after* **January 25, 2023**.

Dedicated Delivery from Advance Warehouse: Any freight received at the Advance Warehouse after **January 27, 2023** could incur a \$650.00 delivery fee if a dedicated truck is required to deliver freight to show site.

Advance and Direct Shipment Rates	Price Per lb.
Advance Warehouse Receiving Rate	\$1.55
Early/Late to Warehouse Rate.....	\$2.25
Dedicated Delivery from Advance Warehouse (in addition to material handling rates).....	\$650.00 (flat fee)

PLEASE NOTE:

Acceptance of Terms & Conditions will be construed when the Material Handling Service Agreement is signed; or when exhibitor's materials are delivered to Levy Show Service Inc. warehouse or to a SHOW / EXPOSITION SITE for which Levy Show Service Inc. is the official show contractor.

Description	Weight in LBS	Price Per lb.	Estimated Total Charges
Advance Receiving - 1 crate, 2 boxes	298	\$1.55	\$461.90

EXHIBITOR INFORMATION

COMPANY

CONTACT

BOOTH#

RATE ADJUSTMENT (OFFICE USE ONLY)

SUBTOTAL

G.S.T. 5%

TOTAL GST#R103315057

PLEASE REFER TO THE PAYMENT & CREDIT CARD CHARGE AUTHORIZATION FORM

****ORDERS WILL NOT BE PROCESSED WITHOUT PAYMENT****

ADVANCE RECEIVING INFORMATION & INSTRUCTIONS

SHIPMENTS CAN BE SENT DIRECTLY TO THE SHOW SITE ON MOVE-IN DAY, OR TO THE ADVANCE WAREHOUSE UP TO THIRTY DAYS PRIOR TO MOVE-IN.

All freight shipped to the advance receiving warehouse must be properly crated, boxed, or stretch wrapped on pallets.

****PLEASE NOTE:** *warehousing for refrigerated or frozen items is unavailable.*

ADVANCE RECEIVING

For advance receiving, mail or fax the Material Handling Order Form & Invoice with pre-payment to LEVY SHOW SERVICE INC. Shipments sent collect **WILL NOT** be accepted.

Advance receiving includes the following:

- receiving your material at the warehouse up to thirty days in advance of the move-in day
- delivering the shipment to your booth at the facility
- removing empty crates from your booth to a designated storage area
- returning your empty crates to your booth at the close of the show
- loading your crates onto your designated carrier at the close of the show

The material handling services provided by LEVY SHOW SERVICE INC. end with the close of the show. It is the responsibility of the exhibitor to make appropriate arrangements with a carrier for shipping following the close of the show. Please make special note of the allotted move-out times and days, and confirm with your carrier that they are able to meet these allotted times.

Please remove all old shipping labels and ensure that all freight destined for the advance warehouse is labeled with the following information:

VANCOUVER INTERNATIONAL BOAT SHOW - COMPANY NAME & BOOTH #

YRC (Yellow) c/o Levy Show Service Inc.
3985 Still Creek Avenue
Burnaby, BC V5C 4E2

Shipments may be sent to the advance warehouse up to thirty days prior to the move-in day for the show. All shipments however, must be received at the warehouse a minimum of five business days in advance of the show move-in date. All shipments must be received at the advance warehouse between the hours of 09:00 and 15:00, Monday to Friday, no earlier than **December 28, 2022** and no later than **January 25, 2023**. Shipments received before or after these dates will be subject to the rate of \$3.45 per pound.

Shipments must include an official weight ticket or bill of lading.

ANY SHIPMENT(S) RECEIVED AT THE ADVANCE WAREHOUSE AFTER JANUARY 27, 2023 WILL INCUR A CHARGE OF \$650.00 IN ADDITION TO LATE TO WAREHOUSE FEES IF A DEDICATED TRUCK IS REQUIRED TO RETRIEVE YOUR SHIPMENT.

PLEASE NOTE: *Canada Post or USPS shipments that require post office pick-up will incur additional charges.*

*****Shipments received from Canada Post or USPS that exceed 2 lbs will not be accepted at the advance warehouse*****

PLEASE SEE NEXT PAGE FOR SHOW SITE SHIPPING INSTRUCTIONS...

MATERIAL HANDLING

TERMS & CONDITIONS

Acceptance of said terms and conditions will be constructed when any of the following conditions are met:

- ~ **THE MATERIAL HANDLING ORDER FORM AND INVOICE IS SIGNED; OR**
- ~ **WHEN EXHIBITOR'S MATERIALS ARE DELIVERED TO LSS'S WAREHOUSE OR TO A SHOW/ EXPOSITION SITE FOR WHICH LEVY SHOW SERVICE INC. IS THE OFFICIAL SHOW CONTRACTORS; OR**
- ~ **WHEN AN ORDER FOR LABOUR AND/ OR RENTAL EQUIPMENT IS PLACED BY AN EXHIBITOR WITH LEVY SHOW SERVICE INC.**

1. **DEFINITIONS.** "Levy Show Service Inc" ("LSS"), and any sub-contractors affiliated within the show.
2. **PACKAGING AND CRATES.** LSS shall not be responsible for damage to loose, uncrated materials, padwrapped or shrink-wrapped materials, glass breakage, concealed damage, carpets in bags or poly, or materials improperly packed. In addition, LSS shall not be responsible for crates and packaging which are unsuitable for handling, in poor condition, or have prior damage. Crated and packaging should be of a design to adequately protect contents for handling by forklift and similar means.
3. **EMPTY CONTAINERS.** Empty container labels will be available at the show site service desk. Affixing labels to the containers is the sole responsibility of EXHIBITOR or his representative. All previous labels must be removed or obliterated. LSS assumes no responsibility for: Error in the above procedures; Removal of containers with old empty labels & without LSS labels; or Improper information on empty labels. LSS WILL NOT BE LIABLE FOR LOSS OR DAMAGE TO CRATES AND CONTAINERS OR THEIR CONTENTS WHEN SAID ITEMS ARE IN EMPTY CONTAINER STORAGE.
4. **INBOUND SHIPMENT(S).** Consistent with trade show industry practices, there may be a lapse of time between the delivery of shipment(s) to the booth and the arrival of EXHIBITOR or his representative, and during such time the materials will be left unattended. LSS WILL NOT BE RESPONSIBLE OR LIABLE FOR ANY LOSS, DAMAGE, THEFT, OR DISAPPEARANCE OF EXHIBITOR'S MATERIALS AFTER SAME HAVE BEEN DELIVERED TO EXHIBITOR'S BOOTH AT SHOW SITE. LSS highly recommends the securing of security services from the Facility or Show Management. If any employee of LSS or its subcontractors shall sign a delivery receipt, bill of lading or other document, we agree that LSS or its subcontractor will do so as the Exhibitor's agent, and the Exhibitor accepts the responsibility thereof.
5. **OUTBOUND SHIPMENT(S).** Consistent with trade show industry practices, there may be a lapse of time between the completions of packing and the actual pickup of materials from the booths for loading onto a carrier and during such time the materials will be left unattended. LSS WILL NOT BE RESPONSIBLE OR LIABLE FOR ANY LOSS, DAMAGE, THEFT, OR DISAPPEARANCE OF EXHIBITOR'S MATERIALS BEFORE SAME HAVE BEEN PICKED UP FOR RELOADING AT THE CONCLUSION OF THE EVENT. LSS highly recommends the securing of security services from Facility or Show Management. All Material Handling Agreements submitted to LSS by EXHIBITOR will be checked at the time of pickup from booth and corrections will be made where discrepancies exist between the quantities of times listed by EXHIBITOR and the actual count of such items in the booth at the time of pickup. In order to expedite removal of materials from the show site, LSS shall have the authority to change designated carriers, if such carriers do not pick up on time. Where no disposition is made by the Exhibitor, materials will be routed by LSS at show site. LSS assumes no liability as a result of such re-routing or handling.
6. **LSS'S RESPONSIBILITIES.** LSS shall be responsible only for those services which it directly provides. LSS assumes no responsibility for any persons, parties, or other contracting firms not under LSS's direct supervision and control. LSS shall not be responsible for loss, delay, or damage due to strike, lockouts, work stoppages, natural elements, vandalism, acts of God, civil disturbances, power failure, explosion, acts of terrorism or war, other causes beyond LSS's reasonable control, nor for ordinary wear & tear in the handling of materials. LSS and its subcontractors shall not be held liable for any damage incurred during the handling of equipment requiring special devices to properly load, place or reload unless advance notice has been given to LSS in time to obtain the proper equipment.
7. **INSURANCE.** It is understood that LSS is not an insurer. Insurance on exhibit materials, if any, shall be obtained by EXHIBITOR in amounts and for perils determined by EXHIBITOR. EXHIBITOR agrees to provide LSS with a release of subrogation to the extent of any insurance settlement received.
8. **CLAIM(S) FOR LOSS.** Claims for loss or damage must be submitted to LSS by the close of the show. No suit or action shall be brought against LSS or its subcontractors more than one year after the cause of action.
 - A. **PAYMENT FOR SERVICES MAY NOT BE WITHHELD.** In the event of any dispute between the EXHIBITOR shall not be entitled to and shall not withhold payment, or any partial payment due to LSS for its services, as an offset against the amount of any alleged loss or damage.
 - B. **MAXIMUM RECOVERY.** If found damaged LSS's sole and exclusive MAXIMUM liability for loss or damage to EXHIBITOR's materials and EXHIBITOR's sole and exclusive remedy is limited to \$.30 per pound article with a maximum liability of \$50.00 per item, or \$1,000.00 per shipment.
9. **JURISDICTION.** THIS CONTRACT SHALL BE CONSTRUED UNDER THE LAWS OF THE PROVINCE OF BC WITHOUT GIVING EFFECT TO ITS CONFLICT OF LAWS RULES. EXCLUSIVE VENUE FOR ALL DISPUTES ARISING OUT OF OR RELATING TO THIS CONTRACT SHALL RESIDE IN A COURT OF COMPETENT JURISDICTION IN VANCOUVER, BC.
10. **INDEMNIFICATION.** EXHIBITOR agrees to indemnify, forever hold harmless and defend LSS, its employees, directors, officers, and agents from and against any and all demands, claims, causes of action, fines, penalties, damages (including consequential), liability, judgements, and expenses (including but not limited to reasonable attorney's fees and investigation costs) on account of personal injury, death, or damage to or loss of property or profits arising out of, or contributed to, by any of the following:
 - EXHIBITOR's negligent supervision of any labour secured through LSS, or the negligent supervision of such labour by any of EXHIBITOR's employees, agents, representative, customers, invitees and/or Exhibitor Appointed Contractor (EAC).
 - EXHIBITOR's negligence, willful misconduct, or deliberate act of EXHIBITOR's employees, agents, representatives, customers, invitees and/or any Exhibitor Appointed Contractor (EAC) at the show or exposition to which this contract relates.
 - EXHIBITOR's violation of CANADIAN or Local ordinances or the violation of Show Regulations and/or Rules as published and set forth by Facility and/or Show Management.
 - EXHIBITOR's inclusion of illegal substances, hazardous materials or waste in any shipment placed with LSS and for the violation of the representations and warranties made regarding hazardous materials made on the front of this Agreement.
11. **MISCELLANEOUS.** EXHIBITOR, as a material part of the consideration LSS for material handling and transportation services, waives and releases all claims against LSS, its employees, agents, officers, and directors, with respect to all matters for which LSS has disclaimed liability pursuant to the provisions of this contract. The EXHIBITOR acknowledges that he or she has read this agreement, understands it and agrees to be bound by its terms, and further agrees that it is the complete and exclusive agreement between the parties. The invalidity or enforceability of any provision hereof shall not affect, modify, or impair the validity and enforceability of all provisions herein.

LEVY
SHOW SERVICE INC.



ADVANCE WAREHOUSE

ADVANCE WAREHOUSE

TO: _____
(EXHIBITOR NAME)

TO: _____
(EXHIBITOR NAME)

BOOTH # _____

BOOTH # _____

YRC (Yellow)
c/o Levy Show Service Inc.
3985 Still Creek Avenue
Burnaby, BC V5C 4E2

YRC (Yellow)
c/o Levy Show Service Inc.
3985 Still Creek Avenue
Burnaby, BC V5C 4E2

EVENT NAME:

VANCOUVER
INTERNATIONAL
BOAT SHOW

EVENT NAME:

VANCOUVER
INTERNATIONAL
BOAT SHOW

NO. _____ # of _____ PCS.

NO. _____ # of _____ PCS.

The above labels are provided for your convenience.
Place one on each piece shipped to the ADVANCE WAREHOUSE.
If more labels are needed, copies are acceptable.

EXHIBITOR SPECIAL RENTAL ORDER FORM & INVOICE

READY BEFORE YOU ARRIVE!

NO LABOUR COSTS!

NO TRUCKING COSTS!

PACKAGE - A 10' x 10' HARDWALL BOOTH



INCLUDES:

White hardwall or coloured fabric backwall panels
 1 - Header sign - 10" x 78"
 1 - 2' x 6' skirted table
 2 - fabric chairs
 2 - rear shelves
 10' x 10' grey carpet

\$840.00

\$1,832.00 value

☐ Package A

TABLE SKIRT COLOUR SELECTIONS

☐ Blue ☐ Red ☐ Burgundy ☐ Silver ☐ White ☐ Black
☐ Hunter Green

FABRIC COVERED PANELS (velcro compatible backwall only)

☐ Silver ☐ Blue ☐ Black ☐ White hardwall

PACKAGE - B 10' x 10' HARDWALL BOOTH



INCLUDES:

3 - Backwall graphic panels
 964mm x 2392mm per panel
 1 - Header sign 1954mm x 250mm H
 1 - 2' x 6' skirted table
 2 - fabric chairs
 2 - rear shelves
 10' x 10' grey carpet

\$1,803.00

\$4,050.00 value

☐ Package B

TABLE SKIRT COLOUR SELECTIONS

☐ Blue ☐ Red ☐ Burgundy ☐ Silver ☐ White ☐ Black
☐ Hunter Green

SPECIAL INSTRUCTIONS

EXHIBITOR INFORMATION

COMPANY

CONTACT

BOOTH#

ACCESSORY OPTIONS

Description	Qty.	Discount Rate	Standard Rate	Total
Flat Wall shelf, .25m deep X 1m long		84.90 each	110.40 each	
Angled shelf, .25m deep X 1m long		110.30 each	143.40 each	
15 watt grey LED arm light (power source NOT included)		115.20 each	149.80 each	
White counter sliding doors & storage shelf (0.5m x1.0m x 1.0m tall)		321.40	417.80	
LOGO upgrade for fascia header		Call for Quote		
White 1/8" pegboard panel (hooks not supplied)		180.00 each	234.00 each	

Please refer to Graphics and Sign order form for digital file specifications that are submitted to Levy Show Service Inc.

Please contact Mr. Joe Wan, Exhibit Sales Specialist for custom quotes via email jwan@levyshow.com or call 604 277 1726.

Header to read:

COST SUMMARY

RATE ADJUSTMENT	(OFFICE USE ONLY)	
100% CANCELLATION FEE	(OFFICE USE ONLY)	
DIGITAL SET UP FEE	\$50.00	
RUSH DELIVERY (IF NECESSARY)		
SUBTOTAL		
P.S.T. 7%		
G.S.T. 5%		
TOTAL		

PLEASE REFER TO THE PAYMENT & CREDIT CARD CHARGE AUTHORIZATION FORM

****ORDERS WILL NOT BE PROCESSED WITHOUT PAYMENT****

STANDARD RATE will be applied to all orders not received and paid in full by **January 11, 2023**. We reserve the right to adjust orders calculated incorrectly.

A 25% CANCELLATION FEE will be applied to all orders received then cancelled. If full service has been provided then 100% of original fee will be applied. GST#R103315057
showspecial.cdr

BULK CARPET ORDER FORM FOR MAIN FLOOR EXHIBITORS

Bulk Carpet (bulk only) Minimum 400 sq ft. Includes install & removal.
Check box of Colour Desired (based on 10' X 10' increments) eg: 50' X 50'

☐ Blue ☐ Tuxedo ☐ Red

Booth Size _____ ft. x _____ ft. = _____ sq. Ft. at \$1.50 per sq. ft.

Underpadding _____ ft. x _____ ft. = _____ sq. Ft. at \$1.10 per sq. ft.

Poly Covering _____ ft x _____ ft = _____ sq Ft at \$0.75 per sq ft

NOTE: Include a floor plan if additional carpet is required to cover steps, skids and display fixtures. A quotation will be forwarded to you before we proceed

**To reserve and complete your order, payment must be made in full before
Friday, December 9, 2023.**

NOTE: Exhibitors will be responsible for any damage to installed carpet other than that caused by normal wear and tear. Carpet with burns, stains, cuts or tears or wheel cleaner considered by Levy Show Service Inc to have been caused through misuse shall be replaced and billed to the exhibitor at the full replacement cost. **No credits will be granted for carpet, padding or poly covering if order is cancelled at anytime.**

EXHIBITOR INFORMATION

COMPANY _____

CONTACT _____

BOOTH# _____

COST SUMMARY

RATE ADJUSTMENT	(OFFICE USE ONLY)	
25% CANCELLATION FEE	(OFFICE USE ONLY)	
SUBTOTAL		
P.S.T. 7%		
G.S.T. 5%		
Less 25% Deposit Fee		
TOTAL		

PLEASE REFER TO THE PAYMENT & CREDIT CARD CHARGE AUTHORIZATION FORM

****ORDERS WILL NOT BE PROCESSED WITHOUT PAYMENT****

STANDARD RATE will be applied to all orders not received and paid in full by **December 9, 2022 (Bulk Carpet only)**. We reserve the right to adjust orders calculated incorrectly.

A 100% CANCELLATION FEE will be applied to all orders received and then cancelled. GST#R103315057

CARPET and DRAPE

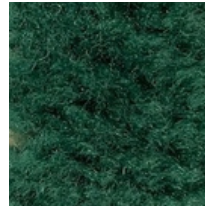
STANDARD Carpet Colour Options



Blue



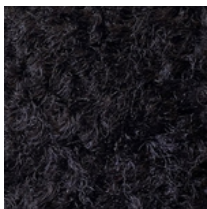
Red



Hunter
Green



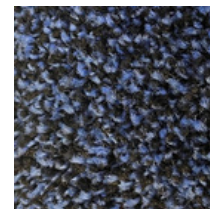
Grey



Black

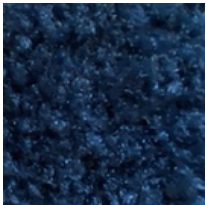


Tuxedo

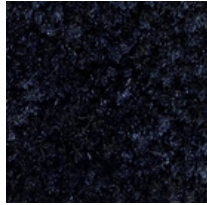


Bluejay

DELUXE CUSTOM 28oz. Carpet Colour Options



Navy



Black



Charcoal

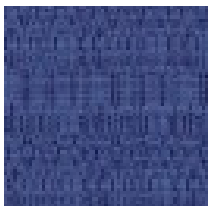


Silver Cloud



White

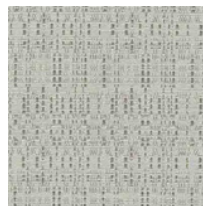
DRAPE Colour Options



Blue



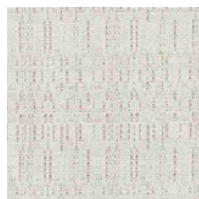
Red



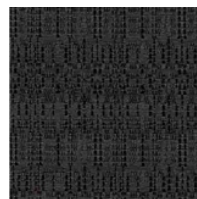
Silver



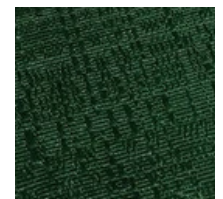
Burgundy



White



Black



Green

**DISCLAIMER* Actual products and colors available may vary from the images shown. All products subject to availability*

Do you have questions?

We would be pleased to help. Contact us at: 604 277 1726

operations@levyshow.com

www.levyshow.com

CARPET, PADDING & DRAPE RENTAL ORDER FORM & INVOICE

COLOURED CARPET SELECTIONS

Description	Discount Rate	Standard Rate	Total
Size - 10 ft. X 10 ft.	277.80	361.20	
10 ft. X 20 ft.	555.60	722.40	
Other sizes in 10' x 10' increments only. Calculate sq. ft. X price per sq. ft.			
Size _____ ft. x _____ ft. = _____ sq. ft.	2.80	3.70	
Custom cut size. Calculate sq. ft. x price per sq. ft.			
Size _____ ft. x _____ ft. = _____ sq. ft.	3.60	4.60	

☐ Blue ☐ Red ☐ Hunter Green ☐ Grey ☐ Black ☐ Tuxedo
☐ Bluejay

A surcharge may be applied for damages incurred after installation.

PADDING & POLY OPTIONS

Description	Discount Rate	Standard Rate	Total
Carpet foam padding per sq. ft.			
Size _____ ft. x _____ ft. = _____ sq. ft.	1.60	2.00	
Poly covering per sq. ft.			
Size _____ ft. x _____ ft. = _____ sq. ft.	0.75	1.00	

SPECIAL INSTRUCTIONS

EXHIBITOR INFORMATION

COMPANY _____

CONTACT _____

BOOTH# _____

CARPET & PADDING PACKAGES

Description	Discount Rate	Standard Rate	Total
Size - 10 ft. X 10 ft. + Pad	416.20	541.10	
10 ft. X 20 ft. + Pad	832.40	1,082.20	
20 ft. X 20 ft. + Pad	1,663.90	2,163.10	

☐ Blue ☐ Red ☐ Hunter Green ☐ Grey ☐ Black ☐ Tuxedo
☐ Bluejay

DRAPE

_____ lin. ft. of 3' high drape	\$10.20/ft	\$13.20/ft	
_____ lin. ft. of 8' high drape	\$14.00/ft	\$18.20/ft	

☐ Blue ☐ Red ☐ Burgundy ☐ Silver ☐ White ☐ Black
☐ Hunter Green

PLEASE NOTE: THE DRAPE PROVIDED WITH YOUR BOOTH SPACE CANNOT BE CHANGED WITHOUT SHOW MANAGEMENT APPROVAL.

****PRICES INCLUDE INSTALLATION & REMOVAL****

COST SUMMARY

RATE ADJUSTMENT (OFFICE USE ONLY)	
25% CANCELLATION FEE (OFFICE USE ONLY)	
SUBTOTAL	
P.S.T. 7%	
G.S.T. 5%	
TOTAL GST#R103315057	

PLEASE REFER TO THE PAYMENT & CREDIT CARD CHARGE AUTHORIZATION FORM

****ORDERS WILL NOT BE PROCESSED WITHOUT PAYMENT****

STANDARD RATE will be applied to all orders not received and paid in full by **January 11, 2023**. We reserve the right to adjust orders calculated incorrectly.

A 25% CANCELLATION FEE will be applied to all orders received and then cancelled 3 weeks prior to install. If full service has been provided then 100% of original fee will be applied.
CARPET-PADDING-DRAPE 2023 10 x 10.cdr

TABLES & CHAIRS

Tables

All tables are available in the below options:

- Unskirted or Skirted
- 30" or 40" height
- 4', 6', or 8' lengths x 2' widths



4' x 2' skirted table



6' x 2' skirted table



8' x 2' skirted table

Skirt Colour Options



Blue



Red



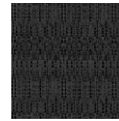
Burgundy



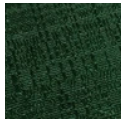
Silver



White



Black



Hunter
Green

Pedestal Tables

All pedestal tables are available in the below options:

- 30" diameter tops
- 17" / 30" / 40" high
- White or Black finished tops



Chairs



Fabric Sled Base Chair



Fabric Arm Chair



Folding Chair



Fabric Steno Chair



Padded Bar Stool



Fabric Highback Stool

**DISCLAIMER* Actual products and colors available may vary from the images shown. All products subject to availability*

Do you have questions?


We would be pleased to help. Contact us at: 604 277 1726


operations@levyshow.com

www.levyshow.com




TABLE AND SEATING RENTAL ORDER FORM & INVOICE

TABLES

Description	Qty.	Discount Rate	Standard Rate	Total
 TABLES 30" HEIGHT				
4' x 2' Skirted		111.40	144.80	
6' x 2' Skirted		128.70	167.30	
8' x 2' Skirted		146.10	189.90	
Fourth side of table skirted		49.00	63.70	
Unskirted table <input type="checkbox"/> 8' <input type="checkbox"/> 6' <input type="checkbox"/> 4'		84.90	110.40	
<input type="checkbox"/> Blue <input type="checkbox"/> Red <input type="checkbox"/> Burgundy <input type="checkbox"/> Silver <input type="checkbox"/> White <input type="checkbox"/> Black <input type="checkbox"/> Hunter Green				

 TABLES 40" COUNTER HEIGHT				
4' x 2' Skirted		172.30	224.00	
6' x 2' Skirted		188.60	245.20	
8' x 2' Skirted		208.40	271.00	
Fourth side of table skirted		56.30	73.20	
Unskirted table <input type="checkbox"/> 8' <input type="checkbox"/> 6' <input type="checkbox"/> 4'		101.40	131.90	
<input type="checkbox"/> Blue <input type="checkbox"/> Red <input type="checkbox"/> Silver <input type="checkbox"/> White <input type="checkbox"/> Black <input type="checkbox"/> Hunter Green				

ROUND PEDESTAL TABLES

Description	Qty.	Discount Rate	Standard Rate	Total
 17" H x 30"D Coffee Table				
White		103.60	134.70	
Black		123.50	160.50	
 27" H x 30"D Round Ped Table				
White		113.60	147.70	
Black		132.30	172.00	
 40" H x 30"D Round Ped Table				
White		123.50	160.50	
Black		142.30	185.00	
ROUND STRETCH SPANDEX COVER				
30"H <input type="checkbox"/> Black		36.40	47.40	
40"H <input type="checkbox"/> Black <input type="checkbox"/> White <input type="checkbox"/> Royal Blue <input type="checkbox"/> Red <input type="checkbox"/> Teal <input type="checkbox"/> Yellow		36.40	47.40	







EXHIBITOR INFORMATION

COMPANY

CONTACT

BOOTH#

CHAIRS

Description	Qty.	Discount Rate	Standard Rate	Total
 FABRIC SLED BASE CHAIR - GREY		72.80	94.60	
 FABRIC ARMCHAIR - GREY		96.50	125.40	
 FOLDING CHAIR		42.40	55.10	
 FABRIC STENO CHAIR		110.30	143.30	
 PADDED BAR STOOL - BLACK		96.20	120.40	
 PADDED HIGH BACK STOOL		126.20	164.10	

COST SUMMARY

RATE ADJUSTMENT	(OFFICE USE ONLY)	
25% CANCELLATION FEE	(OFFICE USE ONLY)	
SUBTOTAL		
P.S.T. 7%		
G.S.T. 5%		
TOTAL	GST#R103315057	

PLEASE REFER TO THE PAYMENT & CREDIT CARD CHARGE AUTHORIZATION FORM

ORDERS WILL NOT BE PROCESSED WITHOUT PAYMENT








STANDARD RATE will be applied to all orders not received and paid in full by **January 11, 2023**. We reserve the right to adjust orders calculated incorrectly.

A 25% CANCELLATION FEE will be applied to all orders received and then cancelled 3 weeks prior to install. If full service has been provided then 100% of original fee will be applied.




TABLE-CHAIR 2023.cdr

ACCESSORIES RENTAL ORDER FORM & INVOICE

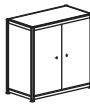


ACCESSORIES

Description	Qty.	Discount Rate	Standard Rate	Total
 ALUMINUM FOLDING LITERATURE RACK (with clear plexi dividers) - double wide rack available please ask for rate		130.10	169.10	
 <input type="checkbox"/> COAT TREE <input type="checkbox"/> CHROME BAG HOLDER		86.00	111.80	
 GARMENT ROLLING RACK		94.80	123.30	
 WASTE BASKET		33.10	43.00	
 RETRACTABLE STANCHION (max belt length 6ft) <input type="checkbox"/> Black <input type="checkbox"/> Blue <input type="checkbox"/> Red		69.50 (each)	90.40 (each)	
 ALUMINUM EASEL Fits sign sizes: 22" x 28" 24" x 36" 28" x 44"		94.80	123.30	
 40''H CHARGING STATION (based on available inventory) **custom graphics available at an additional cost**		965.80	1,255.50	
MINI FRIDGE		238.80	310.40	
LARGE GLASS BOWL		55.10	71.70	

DISPLAY EQUIPMENT

Description	Qty.	Discount Rate	Standard Rate	Total
 CHROME SIGN HOLDER 22" x 28"		101.40	131.80	
 FABRIC POSTER BOARD 4' x 8' grey fabric covered both sides <input type="checkbox"/> Horizontal (shown) <input type="checkbox"/> Vertical		260.20	338.20	
 TALL CABINET SHOW CASE 3 shelves with lockable door 12" X 39" X 77" <input type="checkbox"/> Lights \$78.00		709.50	922.30	

COUNTER OPTIONS

Description	Qty.	Discount Rate	Standard Rate	Total
 COUNTER Sliding doors & storage shelf 20" x 40" x 40" tall <input type="checkbox"/> Lock (\$21.00 each) <input type="checkbox"/> Graphic panel upgrade (\$280.00)		White 321.40	White 417.80	
 JEWELRY CASE One shelf 20" x 40" x 40" tall <input type="checkbox"/> Lock (\$21.00 each) <input type="checkbox"/> Lights (\$21.00 each)		417.30	542.50	
 SHOW CASE Two shelves 20" x 40" x 40" tall <input type="checkbox"/> Lock (\$21.00 each) <input type="checkbox"/> Lights (\$21.00 each)		436.10	566.90	

EXHIBITOR INFORMATION

COMPANY

CONTACT

BOOTH#

COST SUMMARY

RATE ADJUSTMENT	(OFFICE USE ONLY)	
25% CANCELLATION FEE	(OFFICE USE ONLY)	
SUBTOTAL		
P.S.T. 7%		
G.S.T. 5%		
TOTAL	GST#R103315057	

PLEASE REFER TO THE PAYMENT & CREDIT CARD CHARGE AUTHORIZATION FORM

ORDERS WILL NOT BE PROCESSED WITHOUT PAYMENT

STANDARD RATE will be applied to all orders not received and paid in full by **January 11, 2023**. We reserve the right to adjust orders calculated incorrectly.

A 25% CANCELLATION FEE will be applied to all orders received and then cancelled 3 weeks prior to install. If full service has been provided then 100% of original fee will be applied.

ACCESSORIES 2023.cdr

Cardero Cube Ottoman

Vinyl cube ottoman
19.7L x 19.7W x 17.0H



Cardero Rectangle Ottoman

Vinyl rectangle ottoman
39.4L x 19.7W x 17.0H



Cube Ottoman

Vinyl tufted cube ottoman
17.5L x 17.5W x 17.0H



L22 Curved Ottoman

Ottoman with brushed aluminum legs in ultra suede or vinyl.
96.0L x 0.0W x 18.0H



Union Swivel Ottoman

Swivel ottoman with tufted vinyl and chrome base
18.00L x 18.00W x 17.25H



Bean Bag Chair

Bean bag chair in polyester weave fabric
36.0L x 36.0W x 18.0H



Clark Office Chair

Vinyl office chair with chrome base. Adjustable height with wheels.
19.5L x 23.0W x 44.0H



Madrid Bench

Bench ottoman with chrome and plastic base and tufted faux leather cushions
76.0L x 32.0W x 18.5H



Madrid Chair

Lounge chair with chrome and plastic base and tufted faux leather cushions
33.0L x 30.5W x 29.0H



Globus Chair

Swivel pod chair with chrome base in high bicast leather
30.0L x 28.0W x 29.0H



Smart Barstool

Barstool with adjustable base in chrome and padded vinyl seat and back
15.0L x 17.0W x 0.0H



Main Barstool

Barstool with formed plastic seat and chrome or black base
21L x 20.5W x 44.5H



Elliot Tub Chair White

Molded PP chair with wood dowel legs
19.50L x 19.50W x 33.50H



Carrall Chair

Highback lounge chair with aluminum alloy swivel X-base in wool
36.0L x 36.0W x 42.0H



Avenue 6' Bar

Bar with stainless steel frame and plexiglass front, sides and top. Mid storage shelf is included.
Branding opportunity
72.0L x 30.0W x 40.0H



Strathcona Bar



Bar counter with gunmetal pipe frame covered in Acacia wood panels
55.0L x 20.5W x 41.3H






PRESTIGE FURNITURE RENTAL ORDER FORM & INVOICE

SUBJECT TO AVAILABILITY

VANCOUVER INTERNATIONAL BOAT SHOW
February 1 - 5, 2023
BC Place & Granville Island
Vancouver, BC

Description	QTY	Discount Rate	Standard Rate	TOTAL
Cardero Cube Ottoman 19.7L x 19.7W x 17.0H 		124.70	162.10	
Cardero Rectangle Ottoman 39.4L x 19.7W x 17.0H 		224.30	291.60	
Cube Ottoman 17.5L x 17.5W x 17.0H 		107.10	139.20	
L22 Curved Ottoman 96.0L x 0.0W x 18.0H 		1,001.10	1,301.40	
Union Swivel Ottoman 18.0L x 18.0W x 17.25H 		224.30	291.60	
Bean Bag Chair 36.0L x 36.0W x 18.0H 		234.40	304.70	
Clark Office Chair 19.5L x 23.0W x 44.0H 		255.90	332.70	
Madrid Bench 76.0L x 32.0W x 18.5H 		794.60	1033.00	
Madrid Chair 33.0L x 30.5W x 29.0H 		276.40	359.30	
Globus Chair 30.0L x 28.0W x 29.0H 		426.50	554.50	
Smart Barstool 15.0L x 17.0W x 0.0H 		170.70	221.90	
Main Barstool 21L x 20.5W x 44.5H 		93.00	120.90	
Elliot Tub Chair White 19.50L x 19.50W x 33.50H 		76.40	99.30	

Description	QTY	Discount Rate	Standard Rate	TOTAL
Carrall Chair 36.0L x 36.0W x 42.0H 		606.30	788.20	
Avenue 6' Bar 72.0L x 30.0W x 40.0H 		974.70	1,267.10	
Strathcona Bar 55.0L x 20.5W x 41.3H 		894.00	1,162.20	

COST SUMMARY

Rate Adjustment (office use only)

25% Cancellation Fee (office use only)

SUBTOTAL

P.S.T. 7%

G.S.T 5%

TOTAL

EXIBITOR INFORMATION

Company

Contact

Booth#

**PLEASE REFER TO THE PAYMENT & CREDIT CARD
CHARGE AUTHORIZATION FORM**

**** ORDERS NOT BE PROCESSED WITHOUT PAYMENT T****

****A 30% SURCHARGE WILL APPLY TO THE
STANDARD RATE FOR
ANY ORDERS PLACED ONSITE****

STANDARD RATES

Will be applied to all orders not received and paid in full by **January 11, 2023**.
We reserve the right to adjust orders calculated incorrectly

A 25% CANCELLATION FEE

Will be applied to all orders received and then cancelled. If full service has been
provided then 100% of original fee will be applied. GST#R103315057

Beatty Coffee Table

Coffee table with brushed metal base and choice of glass or marble top.

47.5L x 24.0W x 17.5H



Beatty End Table

End table with brushed metal base and choice of glass or marble top.

18.0L x 18.0W x 20.0H



Sydney End Table

End table with stainless steel base and laminate top

26.0L x 26.0W x 18.0H



Sydney Coffee Table

Coffee table with stainless steel base and laminate top

48.0L x 26.0W x 18.0H



Heather Coffee Table

Coffee table with patterned rose gold base and glass or marble top

47.20L x 15.70W x 23.60H



Heather End Table

End table with patterned rose gold base and glass or marble top

19.70L x 19.70W x 19.70H



Davie End Table

Square end table with laminate top and chrome frame

24.0L x 24.0W x 20.0H



Davie Coffee Table

Rectangular coffee table with laminate top and chrome frame

47.0L x 24.0W x 16.0H



Plank End Table

18.0L x 18.0W x 17.5H



L22 Plank Coffee Table

Coffee table with powder coated base and enamel wood top

48.0L x 22.0W x 18.0H



Wall Street Coffee Table

White enamel coffee table with chrome base

44.0L x 22.0W x 15.0H



Wall Street End Table

White enamel end table with chrome base

22.0L x 15.8W x 18.5H



Jasper Coffee Table

Ash wood, finished edge.

39.50L x 39.50W x 15.50H



Elliot Cafe Table

Molded PP chair with wood dowel legs

27.00L x 27.00W x 29.00H






PRESTIGE FURNITURE RENTAL ORDER FORM & INVOICE

SUBJECT TO AVAILABILITY

VANCOUVER INTERNATIONAL BOAT SHOW

February 1 - 5, 2023
BC Place & Granville Island
Vancouver, BC

Description	QTY	Discount Rate	Standard Rate	TOTAL
Beatty Coffee Table 47.5L x 24.0W x 17.5H ● □ ● □ 		327.30	425.50	
Beatty End Table 18.0L x 18.0W x 20.0H ● □ ● □ 		220.20	286.20	
Sydney End Table 26.0L x 26.0W x 18.0H ● □ ○ □ 		149.10	193.80	
Sydney Coffee Table 48.0L x 26.0W x 18.0H ● □ ○ □ 		198.80	258.40	
Heather Coffee Table 47.20L x 15.70W x 23.60H ○ □ 		261.00	339.30	
Heather End Table 19.70L x 19.70W x 19.70H ○ □ ● □ 		173.25	225.20	
Davie End Table 24.0L x 24.0W x 20.0H ● □ 		124.70	162.20	
Davie Coffee Table 47.0L x 24.0W x 16.0H ● □ 		165.60	215.30	
Plank End Table 18.0L x 18.0W x 17.5H ○ □ ● □ 		128.50	167.10	
L22 Plank Coffee Table 48.0L x 22.0W x 18.0H ○ □ ● □ ● □ 		255.90	332.70	
Wall Street Coffee Table 44.0L x 22.0W x 15.0H ○ □ 		298.10	387.50	
Wall Street End Table 22.0L x 15.8W x 18.5H ○ □ 		149.10	193.80	
Jasper Coffee Table 39.50L x 39.50W x 15.50H ● □ 		351.50	457.00	

Description	QTY	Discount Rate	Standard Rate	TOTAL
Elliot Cafe Table 27.00L x 27.00W x 29.00H ○ □ ● □ 		173.30	225.20	

COST SUMMARY

Rate Adjustment (office use only)

25% Cancellation Fee (office use only)

SUBTOTAL

P.S.T. 7%

G.S.T 5%

TOTAL

EXIBITOR INFORMATION

Company

Contact

Booth#

**PLEASE REFER TO THE PAYMENT & CREDIT CARD
CHARGE AUTHORIZATION FORM**

**** ORDERS NOT BE PROCESSED WITHOUT PAYMENT ****

****A 30% SURCHARGE WILL APPLY TO THE
STANDARD RATE FOR
ANY ORDERS PLACED ONSITE****

STANDARD RATES

Will be applied to all orders not received and paid in full by **January 11, 2023**.
We reserve the right to adjust orders calculated incorrectly

A 25% CANCELLATION FEE

Will be applied to all orders received and then cancelled. If full service has been
provided then 100% of original fee will be applied. GST#R103315057

Avenue Bar Table

Square cocktail table with stainless steel frame.

26.0L x 26.0W x 40.0H



Fraser Bar Table

Industrial bar table with pressed metal base and wood veneer table top

26.0L x 26.0W x 42.0H



8' Harvest Dining Table

Reclaimed wood top dining table with steel legs

96.0L x 35.0W x 30.0H



8' Harvest Dining Table W/ Charing Unit

Reclaimed wood top dining table with steel legs

96.0L x 35.0W x 30.0H



L22 Communal Table

Dining table with metal frame and acrylic top. Recessed centre trough and internal lighting

95.0L x 38.0W x 30.0H



L22 Communal Table W/ Charing Unit

Dining table with metal frame and acrylic top. Recessed centre trough and internal lighting

95.0L x 38.0W x 30.0H



L22 High Straight Bar Table

Console table with metal frame and acrylic top with internal lighting

72.0L x 18.0W x 40.0H



L22 High Straight Bar Table W/ Charging Unit

Console table with metal frame and acrylic top with internal lighting

72.0L x 18.0W x 40.0H



Girari Arc Buffet 5' Communal Table

Communal table with brushed welded aluminum curved base and tempered glass top

60.0L x 30.0W x 42.0H



Girari Bar Table

Pedestal Bar table with brushed welded aluminum curved base and tempered glass top

30.0L x 30.0W x 30.0H



Girari Arc Rounded Dining Table

Dining or meeting table with brushed welded aluminum curved base and tempered glass top

60.0L x 30.0W x 30.0H



Girari Straight Buffet Communal Table

Communal table with brushed welded aluminum curved base and tempered glass top

90.0L x 34.0W x 42.0H



Decorative Pillows

We have various colours, styles, and sizes to go with your decor and branding initiatives. Let us help you find what you're looking for.

Small Pillows Appox. size 16"x16"



Large Pillows Appox. size 20"x 20"



Area Rugs Appox. size 7' x 10'



Fleming Sofa

Mid-century sofa with walnut legs in saddle brown tufted leather
84.0L x 35.0W x 30.0H



Fleming Arm Chair

Mid-century arm chair with walnut legs in saddle brown tufted leather
35.0L x 35.0W x 30.0H



Georgia Sofa

Contemporary sofa with silver brushed powder coated legs in vinyl.
78.0L x 31.0W x 33.0H



PRESTIGE FURNITURE RENTAL ORDER FORM & INVOICE

SUBJECT TO AVAILABILITY

VANCOUVER INTERNATIONAL BOAT SHOW
 February 1 - 5, 2023
 BC Place & Granville Island
 Vancouver, BC

Description	QTY	Discount Rate	Standard Rate	TOTAL
Avenue Bar Table 26.0L x 26.0W x 40.0H <input type="radio"/> <input type="radio"/> <input checked="" type="radio"/> <input type="radio"/> <input type="radio"/> <input type="radio"/>		281.40	365.80	
Fraser Bar Table 26.0L x 26.0W x 42.0H <input checked="" type="radio"/> <input type="radio"/>		211.60	275.00	
8' Harvest Dining Table 96.0L x 35.0W x 30.0H <input checked="" type="radio"/> <input type="radio"/>		637.90	829.20	
8' Harvest Dining Table W/ Charing Unit 96.0L x 35.0W x 30.0H <input checked="" type="radio"/> <input type="radio"/>		734.80	955.20	
L22 Communal Table 95.0L x 38.0W x 30.0H <input type="radio"/> <input type="radio"/>		672.30	874.00	
L22 Communal Table W/ Charing Unit 95.0L x 38.0W x 30.0H <input type="radio"/> <input type="radio"/>		1,340.90	1,743.10	
L22 High Straight Bar Table 72.0L x 18.0W x 40.0H <input type="radio"/> <input type="radio"/>		412.70	536.40	
L22 High Straight Bar Table W/ Charging Unit 72.0L x 18.0W x 40.0H <input type="radio"/> <input type="radio"/>		996.80	1,295.80	
Girari Arc Buffet 5' Communal Table 60.0L x 30.0W x 42.0H <input type="radio"/> <input type="radio"/>		510.60	663.80	
Girari Bar Table 30.0L x 30.0W x 30.0H <input type="radio"/> <input type="radio"/>		196.80	255.80	
Girari Arc Rounded Dining Table 60.0L x 60.0W x 30.0H <input type="radio"/> <input type="radio"/>		457.30	594.50	
Girari Straight Buffet Communal Table 90.0L x 34.0W x 42.0H <input type="radio"/> <input type="radio"/>		463.10	602.00	

Description	QTY	Discount Rate	Standard Rate	TOTAL
Fleming Sofa 27.00L x 27.00W x 29.00H <input checked="" type="radio"/> <input type="radio"/>		1,362.60	1,771.40	
Fleming Arm Chair 35.0L x 35.0W x 30.0H <input checked="" type="radio"/> <input type="radio"/>		878.70	1,142.40	
Georgia Sofa 78.0L x 31.0W x 33.0H <input checked="" type="radio"/> <input type="radio"/>		1,241.50	1,614.00	
Decorative Pillows	QTY	Discount Rate	Standard Rate	TOTAL
Small Pillows Approx size 16" x 16"			call for quote	
Large Pillows Approx. size 20" x 20"			call for quote	
Area Rugs Approx. size 7' x 10'			call for quote	

COST SUMMARY

Rate Adjustment (office use only)	
25% Cancellation Fee (office use only)	
SUBTOTAL	
P.S.T. 7%	
G.S.T 5%	
TOTAL	

EXIBITOR INFORMATION

Company	
Contact	Booth#

PLEASE REFER TO THE PAYMENT & CREDIT CARD CHARGE AUTHORIZATION FORM

**** ORDERS NOT BE PROCESSED WITHOUT PAYMENT T****

****A 30% SURCHARGE WILL APPLY TO THE STANDARD RATE FOR ANY ORDERS PLACED ONSITE****

STANDARD RATES

Will be applied to all orders not received and paid in full by **Januray 11, 2023**. We reserve the right to adjust orders calculated incorrectly

A 25% CANCELLATION FEE

Will be applied to all orders received and then cancelled. If full service has been provided then 100% of original fee will be applied. GST#R103315057

Georgia Chair

Contemporary chair with silver brushed powder coated legs in vinyl.
37.0L x 31.0W x 33.0H



Square Sofa

Fabric Sofa with chrome base
83.0L x 33.5W x 35.0H



Square Chair

Fabric arm chair with chrome base
28.0L x 28.0W x 32.0H



Joey Chair

Low back armchair with dark wooden legs and fabric seat
25.0L x 28.0W x 31.5H



Joey Sofa

Low back sofa with dark wooden legs and fabric seat
62.0L x 27.0W x 31.5H



Modular Seating

The following items work on their own or can be set up in a variety of different seating arrangements to suit your event.

Georgia Sofa Powered

Contemporary sofa with silver brushed powder coated legs in vinyl.
78.0L x 31.0W x 33.0H



Wall Street Corner Chair

Sectional corner chair with chrome base in white vinyl
27.0L x 28.0W x 31.0H



Wall Street Left Arm Chair

Sectional left arm chair with chrome base in white vinyl
27.0L x 28.0W x 31.0H



Wall Street Right Arm Chair

Sectional right arm chair with chrome base in white vinyl
27.0L x 28.0W x 31.0H



Wall Street Arm Chair

Arm chair with chrome base in white vinyl with buttons
27.0L x 28.0W x 31.0H



Wall Street Armless Chair

Armless chair with chrome base in white vinyl with buttons
23.0L x 28.0W x 31.0H



L22 Heathrow Loveseat

Sectional loveseat in vinyl with metallic powder-coated legs
48.0L x 24.0W x 29.0H



L22 Heathrow Armless Chair

Sectional armless chair with metallic powder-coated legs in Vinyl
24.0L x 24.0W x 28.0H



L22 Heathrow Corner









Sectional corner chair in vinyl with metallic powder-coated legs
24.0L x 24.0W x 28.0H





PRESTIGE FURNITURE RENTAL ORDER FORM & INVOICE

SUBJECT TO AVAILABILITY

VANCOUVER INTERNATIONAL BOAT SHOW
February 1 - 5, 2023
BC Place & Granville Island
Vancouver, BC

Description	QTY	Discount Rate	Standard Rate	TOTAL
Georgia Chair 37.0L x 31.0W x 33.0H ● □ 		845.70	1,099.40	
Square Sofa 83.0L x 33.5W x 35.0H ● □ ● □ ● □ 		808.60	1,051.20	
Square Chair 28.0L x 28.0W x 32.0H ● □ ● □ ● □ ● □ 		388.40	504.90	
Joey Chair 25.0L x 28.0W x 31.5H ● □ ● □ 		448.20	582.70	
Joey Sofa 62.0L x 27.0W x 31.5H ● □ 		894.00	1,162.20	
Modular Seating				
Wall Street Left Arm Chair 27.0L x 28.0W x 31.0H ○ □ ● □ 		496.70	645.60	
Wall Street Corner Chair 27.0L x 28.0W x 31.0H ○ □ ● □ 		496.70	645.60	
Wall Street Right Arm Chair 27.0L x 28.0W x 31.0H ○ □ ● □ 		496.70	645.60	
Wall Street Armless Chair 23.0L x 28.0W x 31.0H ○ □ ● □ 		496.70	645.60	
Wall Street Arm Chair 27.0L x 28.0W x 31.0H ○ □ ● □ 		496.70	645.60	
L22 Heathrow Armless Chair 24.0L x 24.0W x 28.0H ○ □ 		352.80	458.60	
L22 Heathrow Corner 24.0L x 24.0W x 28.0H ○ □ 		352.80	458.60	

Description	QTY	Discount Rate	Standard Rate	TOTAL
Georgia Sofa - Powered 78.0L x 31.0W x 33.0H ○ □ 		1,490.00	1,936.90	
L22 Heathrow Loveseat 48.0L x 24.0W x 29.0H ○ □ 		1,141.10	1,483.50	

COST SUMMARY

Rate Adjustment (office use only)	
25% Cancellation Fee (office use only)	
SUBTOTAL	
P.S.T. 7%	
G.S.T 5%	
TOTAL	

EXHIBITOR INFORMATION

Company	
Contact	Booth#

PLEASE REFER TO THE PAYMENT & CREDIT CARD CHARGE AUTHORIZATION FORM

**** ORDERS NOT BE PROCESSED WITHOUT PAYMENT ****

****A 30% SURCHARGE WILL APPLY TO THE
STANDARD RATE FOR
ANY ORDERS PLACED ONSITE****

STANDARD RATES

Will be applied to all orders not received and paid in full by **January 11, 2023**.
We reserve the right to adjust orders calculated incorrectly

A 25% CANCELLATION FEE

Will be applied to all orders received and then cancelled. If full service has been
provided then 100% of original fee will be applied. GST#R103315057

Package A



Includes:

1 x Girari Table

Brushed aluminum bar table w/
glass top.

2 x Main Bar Stools

Formed plastic seat and chrome
base.

Package B



Includes:

1 x Sydney End Table

Stainless steel base and laminate
top.

2 x Wall Street Arm Chairs

Chrome base and white vinyl seat
w/buttons.

Package C



Includes:

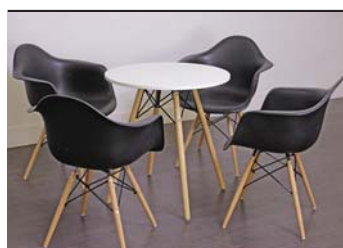
1 x Plank Coffee Table

Metal base with enamel painted
top.

2 x Wall Street Loveseat

Chrome base and white vinyl seat
w/buttons.

Package D



Includes:

1 x Elliot Café Table

Laminate tabletop w/wood dowel
legs

4 x Elliot Tub Chair

Molded PP chair w/wood dowel
legs.



HEAD OFFICE

210 - 12011 Riverside Way
Richmond, BC
Canada V6W 1K6

Telephone 604 277 1726

Fax 604 277 1736

Email operations@levyshow.com

Web www.levyshow.com

PRESTIGE FURNITURE PACKAGE RENTAL ORDER FORM & INVOICE

SUBJECT TO AVAILABILITY

VANCOUVER INTERNATIONAL BOAT SHOW

February 1 - 5, 2023
BC Place & Granville Island
Vancouver, BC

Description	QTY	Discount Rate	Standard Rate	TOTAL
-------------	-----	---------------	---------------	-------

Package A

				
		389.70	506.60	

Package C

				
		2,242.40	2,915.10	

Package D

				
		480.20	624.20	

☐ ☐ ☒ ☐

Description	QTY	Discount Rate	Standard Rate	TOTAL
-------------	-----	---------------	---------------	-------

Package B

				
		1,142.30	1,485.00	

COST SUMMARY

Rate Adjustment (office use only)

25% Cancellation Fee (office use only)

SUBTOTAL

P.S.T. 7%

G.S.T 5%

TOTAL GST# R013315057

EXIBITOR INFORMATION

Company

Contact

Booth#

PLEASE REFER TO THE PAYMENT & CREDIT CARD
CHARGE AUTHORIZATION FORM

** ORDERS WILL NOT BE PROCESSED WITHOUT PAYMENT **

**A 30% SURCHARGE WILL APPLY TO THE
STANDARD RATE FOR
ANY ORDERS PLACED ONSITE**

STANDARD RATES

Will be applied to all orders not received and paid in full by **January 11, 2023**.
We reserve the right to adjust orders calculated incorrectly

A 25% CANCELLATION FEE

Will be applied to all orders received and then cancelled 3 weeks prior to install.
If full service has been provided then 100% of original fee will be applied.

CUSTOM EXHIBITS

A more sophisticated technique to exhibit marketing messages creatively and effectively!

With decades of service, Levy continues to provide viable and reliable alternatives to maximize clients' overall booth space. Our sales team and design specialists work closely with each and every client to create a unique exhibit designed to meet a wide variety of today's marketing strategies. Whether the image and budget are conservative or extravagant Levy exceeds to offer the most suitable and perfect space solutions.



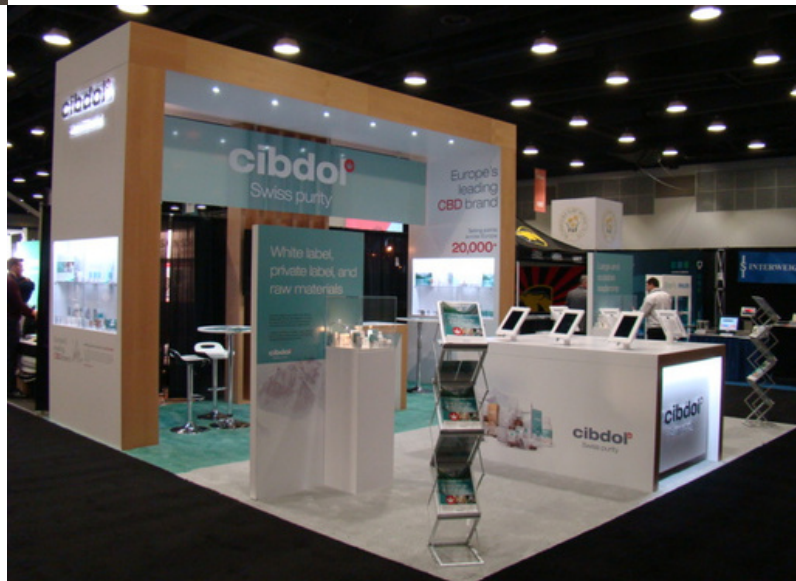
Collaboratively designed to meet your specific requirements, budget, and bring your vision to reality.

Each Levy Custom Designed Exhibit will be built to exact specifications and will be:

- Unique
- Attractive
- Versatile
- Impressive
- Memorable
- Functional
- Creative
- Inviting
- Efficient

Let us help you create a one of a kind booth space.

Call our experienced professionals for an innovative, customized, and no obligation approach.



HARDWALL SYSTEM RENTAL ORDER FORM & INVOICE

MODEL 110



****image is based on 10' x 10' booth size****

☐ 8' x 10' ☐ 10' x 10'

Model 110 includes:

- Aluminum structure
- White hardwall panels
- Straight header sign with company name in block lettering
- Carpet
- Installation and dismantle

Discount Rate:
\$2,089.80

Standard Rate:
\$2,716.70

MODEL 120



****image is based on 10' x 10' booth size****

☐ 8' x 10' ☐ 10' x 10'

Model 120 includes:

- Aluminum structure
- White hardwall panels
- Corner booth with curved counter
- Curved header sign
- Carpet
- Installation and dismantle

Discount Rate:
\$2,485.00

Standard Rate:
\$3,230.50

MODEL 210



****image is based on 10' x 20' booth size****

☐ 8' x 20' ☐ 10' x 20'

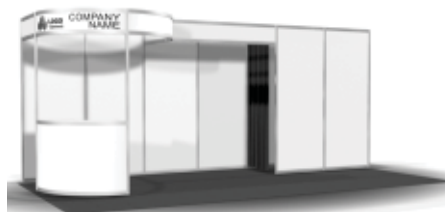
Model 210 includes:

- Aluminum structure
- White hardwall panels
- Straight backwall with 1 curved header
- Carpet
- Installation and dismantle

Discount Rate:
\$3,086.50

Standard Rate:
\$4,012.50

MODEL 220



****image is based on 10' x 20' booth size****

☐ 8' x 20' ☐ 10' x 20'

Model 220 includes:

- Aluminum structure
- White hardwall panels
- Corner booth with curved counter, 1 header sign & storage locker (not lockable)
- Carpet
- Installation and dismantle

Discount Rate:
\$4,288.70

Standard Rate:
\$5,575.30

HARDWALL UPGRADES & ACCESSORIES

Description	Qty.	Discount Rate	Standard Rate	Total
LOGO upgrade		Call for Quote		
Wall shelf, .25m deep x 1m long		84.90	110.40	
Angled shelf, .25m deep x 1m long		110.30	143.40	
15 watt grey LED arm light, (power NOT included)		115.20	149.80	
2m white curve counter WITH inside shelf (NO doors)		633.20	823.20	
White PVC slat wall, 2.5m high x 1m wide, per lin.m		226.30/m	294.20/m	

****CUSTOM BOOTHS AVAILABLE. Call 604 277 1726 for a quote****

EXHIBITOR INFORMATION

COMPANY

CONTACT

BOOTH#

CARPET COLOUR SELECTIONS

☐ Blue ☐ Red ☐ Hunter Green ☐ Grey ☐ Black
☐ Tuxedo ☐ Bluejay

HEADER DETAILS

HEADER TO READ (up to 20 characters, black lettering on white)

Header One

Header Two

****LOGO upgrade available at additional cost. Please contact Exhibitor Services for a quote.****

COST SUMMARY

RATE ADJUSTMENT	(OFFICE USE ONLY)	
25% CANCELLATION FEE	(OFFICE USE ONLY)	
SUBTOTAL		
P.S.T. 7%		
G.S.T. 5%		
TOTAL		

PLEASE REFER TO THE PAYMENT & CREDIT CARD CHARGE AUTHORIZATION FORM

****ORDERS WILL NOT BE PROCESSED WITHOUT PAYMENT****

STANDARD RATE will be applied to all orders not received and paid in full by **January 11, 2023**. We reserve the right to adjust orders calculated incorrectly.

A 25% CANCELLATION FEE will be applied to all orders received then cancelled. If full service has been provided then 100% of original fee will be applied. GST#R103315057

HARDWALL-RENTAL 2023.cdr

GRAPHICS & SIGN ORDER FORM & INVOICE

STANDARD SIGN SIZES

Quantity	Description	Discount Rate	Standard Rate	Total
	22" x 28"	109.20	142.00	
	28" x 44"	201.30	261.70	
	7' x 3' x 0.5" gatorboard sign w/ plexi feet	748.20	972.70	

OPTIONAL SERVICES

Quantity	Description	Discount Rate	Standard Rate	Total
	Easel back on sign (Up to 22" x 28")	18.20	23.70	
	Logo sign	Quoted on Request		
	Banner	Quoted on Request		

DIGITAL GRAPHICS (6 SQ FT MINIMUM)

- Digital files must be provided to LSS specifications.
- Graphics should be sent in vector format as .eps files.
Also acceptable: Adobe Illustrator (.ai)
- Photographic & Pixel based complex graphics (Bitmap Files) must be **MINIMUM** 75 dpi at actual output size.
Acceptable formats include: .tif, .bmp, & .jpg, (flattened images)
- All text **MUST** be outlined / converted to curves (if vector files) and embedded fonts (if bitmap files)
- No bleed or crop marks on files (create files to exact dimensions)
- Art work is to be received as print ready.
- Editing & Design time is charged at a rate of \$99.75 per hour (1 hour minimum).
- Digital files must be received at least three (3) weeks before show to receive discount price.

Quantity	Description	Discount Rate	Standard Rate	Total
	Digital Prints per sq.ft.	33.90	44.10	
	Second side printing	Quoted on Request		




EXHIBITOR INFORMATION

COMPANY

CONTACT

BOOTH#

GRAPHIC ACCESSORIES

Quantity	Description	Discount Rate	Standard Rate	Total
	 Aluminum easel Fits sign sizes: 22" x 28" 24" x 36" 28" x 44"	94.80	123.20	
	 Chrome sign holder 22" x 28"	101.40	131.80	
	 Floor decals Suggested size 16" x 16" - install and removal not included Custom size and design	59.50	77.40	
	Fabric system hardware	Quoted on Request		

ADDITIONAL SERVICES & TERMS

If you would like us to provide more information and pricing on banners, logos, digital signs, special graphics or any other items please contact our Exhibitor Services Department for a complimentary consultation.

Orders required within 72 hours before show opening may be subject to a rush delivery charge. Please allow a minimum of 24 hours for any on-site sign orders.

COST SUMMARY

RATE ADJUSTMENT (OFFICE USE ONLY)	
100% CANCELLATION FEE (OFFICE USE ONLY)	
DIGITAL SET UP FEE	\$55.10
RUSH DELIVERY (IF NECESSARY)	
SUBTOTAL	
P.S.T. 7%	
G.S.T. 5%	
TOTAL GST#R103315057	

PLEASE REFER TO THE PAYMENT & CREDIT CARD CHARGE AUTHORIZATION FORM

****ORDERS WILL NOT BE PROCESSED WITHOUT PAYMENT****

STANDARD RATE will be applied to all orders not received and paid in full by **January 11, 2023**. We reserve the right to adjust orders calculated incorrectly.

A 100% CANCELLATION FEE will be applied to all orders received and then cancelled.

GRAPHICS - SIGN 2023.cdr

PLANT & FLOWER RENTAL ORDER FORM & INVOICE

LIVE PLANTS

Quantity	Description	Discount Rate	Standard Rate	Total
	Potted flowers (seasonal)	72.30	94.00	
	Boston fern	88.80	115.50	
	Orchid in ceramic pot	127.90	166.30	

LIVE TROPICAL PLANTS

Quantity	Description	Discount Rate	Standard Rate	Total
	3' - 4' tall floor plant	130.00	169.00	
	4' - 5' tall floor plant	172.00	223.60	

COLOURFUL FRESH CUT FLOWERS

Quantity	Description	Discount Rate	Standard Rate	Total
	Small floral arrangement (seasonal)	178.90	232.60	
	Large floral arrangement (seasonal)	231.30	300.70	
	Custom floral arrangement	Quoted on Request		

Please indicate colour preference here, if any (subject to availability): _____

The above items are priced on a rental basis only. Price includes container, delivery, installation and removal at the end of show. Any items missing from the booth upon dismantling are the responsibility of the exhibitor and an additional charge will be applied.

SPECIAL INSTRUCTIONS

EXHIBITOR INFORMATION

COMPANY

CONTACT

BOOTH#

COST SUMMARY

RATE ADJUSTMENT	(OFFICE USE ONLY)	
25% CANCELLATION FEE	(OFFICE USE ONLY)	
SUBTOTAL		
P.S.T. 7%		
G.S.T. 5%		
TOTAL	GST#R103315057	

PLEASE REFER TO THE PAYMENT & CREDIT CARD CHARGE AUTHORIZATION FORM

****ORDERS WILL NOT BE PROCESSED WITHOUT PAYMENT****

STANDARD RATE will be applied to all orders not received and paid in full by **January 11, 2023**. We reserve the right to adjust orders calculated incorrectly.

A 25% CANCELLATION FEE will be applied to all orders received and then cancelled 3 weeks prior to install. If full service has been provided then 100% of original fee will be applied.

FLOWER 2023.cdr

AUDIO VISUAL AND COMPUTER ORDER FORM & INVOICE

QTY	EQUIPMENT AVAILABLE	Discount Order Daily Rate	Standard Order Daily Rate (max at 3 days)	# of days	TOTAL
	LARGE PLASMA & LCD DISPLAYS - Includes table-top base				
	32" LED Display (16:9) VIDEO MONITOR	\$307.70	\$399.90		
	40" LED Display (16:9) - Includes Speakers, Smart TV USB capable	\$430.50	\$559.70		
	43" 4K LED Display (16:9) - Includes Speakers, Smart TV USB capable	\$447.10	\$581.20		
	55" 4K LED Display (16:9) - Includes Speakers, Smart TV USB capable	\$655.70	\$852.40		
	55" LED Display (16:9) - Includes Speakers, Smart TV USB capable	\$655.70	\$852.40		
	60" LCD Display (16:9) - Includes Speakers, Smart TV USB capable	\$775.60	\$1,008.30		
	70" LCD Display (16:9) - Includes Speakers, Smart TV USB capable	\$834.60	\$1,085.00		
	80" LED Monitor (16:9) - Includes Speakers, Smart TV USB capable (includes stand)	\$ Upon Request			
	Flat Monitor Floor Stand	\$91.60	\$119.00		
	Flat Monitor Floor Stand w shelf	\$111.10	\$144.40		
	FLOOR STANDS ARE ONLY COMPATIBLE WITH OUR RENTAL MONITORS				
	If no floor stand is required will it be:				
	<input type="checkbox"/> Mounted to booth hardwall system <input type="checkbox"/> Placed on counter or table				
	Does your monitor require any of the following compatibilites?				
	<input type="checkbox"/> HDMI <input type="checkbox"/> VGA <input type="checkbox"/> USB				
	VIDEO PLAYBACK - for use with displays listed above				
	Blu-Ray HD Player	\$185.20	\$240.80		
	() DVD Player - NTSC or () Multi-region DVD Player	\$79.90	\$103.90		
	COMPUTERS (Desktop / Laptop) & Printers				
	Laptop - I7 2.3G W7 OFFICE2010 (16:9)	\$368.20	\$478.70		
	22" LCD Display (16:9) WUXGA [No Audio Speakers]	\$119.40	\$155.20		
	24" LCD Display (16:9) WUXGA [No Audio Speakers]	\$134.80	\$175.30		
	HP 4250+ Laserjet Printer	\$214.20	\$278.50		
	Wireless PPT Remote/Mouse	\$68.00	\$88.50		
	SCREENS / PROJECTORS				
	Tripod Screen - () 50" x 80" or () 70" x 70" or () 84" x 84" or () 96" x 96"	\$74.10	\$96.40		
	Meeting Room LCD data/video projector (16:9) WXGA, 3700 lumens	\$382.00	\$496.60		
	Exhibition Booth LCD data/video projector (16:9) WUXGA, 5000 lumens	\$921.70	\$1,198.20		
	Video cart with black skirting () 42" or () 48"	\$37.00	\$48.00		
	Please call for rates on other screens, projectors, carts or rigging brackets	On Request	On Request		
	AUDIO				
	Booth Audio System c/w one wireless handheld mic, one mixer/amp, two speakers on stands	\$381.80	\$496.30		
	UHF wireless Microphone () handheld or () headset or () lavalier	\$196.80	\$255.80		

*** IF YOU DO NOT SEE WHAT YOU ARE LOOKING FOR PLEASE CONTACT OUR EXHIBITOR SERVICES DEPARTMENT AT
604 277 1726 OR EMAIL operations@levyshow.com AND REQUEST A CUSTOM QUOTE.***

AUDIO VISUAL AND COMPUTER ORDER FORM & INVOICE

SPECIAL INSTRUCTIONS (please list any specific cords you require)

RENTAL AGREEMENT

1. Please forward payment in full with your order.
2. A **25% cancellation fee** will be applied to all orders received then cancelled 3 weeks prior to install. If full service has been provided then 100% of the original fee will be applied.
3. Please note: The rented equipment will be delivered and installed in your booth towards the end of your move in time.
4. The equipment is your responsibility until picked up by a Levy Show Service Inc. representative. DO NOT leave equipment unattended in the exhibit booth once the show finished.

SUPPLEMENTARY CONDITIONS

EXTENSION To avoid inconvenience to other customers, any extension of the rental period must be arranged prior to termination of the original rental period.

INSURANCE Insurance for the full replacement value of the equipment rented is the responsibility of the customer.

SOFTWARE CONDITIONS

SOFTWARE The customer agrees to be bound by all applicable licence and copyright laws of any of the software on this equipment.

GUARANTEES & RESPONSIBILITY LIMITATION

Levy Show Service Inc. is not responsible for software issues and will charge the customer if it responds to problems caused by the customer's software.

*** INSTALL / DISMANTLE & TRANSPORTATION LABOUR CHARGES ***

Basic installation cost for one item is \$367.50

Multiple items ordered will require a custom install and dismantle labour quote.

Please contact our operations department to obtain a quote.

EXHIBITOR INFORMATION

Company

Contact

Booth #

COST SUMMARY

RATE ADJUSTMENT	(OFFICE USE ONLY)	
SUBTOTAL		
Cables & Consumables (+10.0% on equipment)		
Special Installation Charges		on request
Basic Install & Transportation Charges per item		
P.S.T. 7%		
G.S.T. 5%		
TOTAL		

PLEASE REFER TO THE PAYMENT & CREDIT CARD CHARGE AUTHORIZATION FORM

ORDERS WILL NOT BE PROCESSED WITHOUT PAYMENT

STANDARD RATE

will be applied to all orders not received and paid in full by **January 11, 2023**. We reserve the right to adjust orders calculated incorrectly.

A 25% CANCELLATION FEE

will be applied to all orders received and then cancelled 3 weeks prior to install. If full service has been provided then 100% of original fee will be applied.

GST #R103315057

Page 2 of 2

EXHIBIT BOOTH CLEANING ORDER FORM & INVOICE

SERVICES

OUR SERVICES INCLUDE THE FOLLOWING:

EXHIBIT VACUUMING

EMPTYING OF WASTEBASKETS

GENERAL HOUSEKEEPING

DISCOUNT RATE

TOTAL SQUARE FEET OF BOOTH SPACE	DAYS REQUIRED	RATE	TOTAL
100 Square Feet Minimum Order	X Total Number of Days	X \$0.85 =	
<input type="checkbox"/> Prior To Show Opening	<input type="checkbox"/> Prior to Second Day	<input type="checkbox"/> Prior to Third Day	

STANDARD RATE & ON-SITE ORDERS

TOTAL SQUARE FEET OF BOOTH SPACE	DAYS REQUIRED	RATE	TOTAL
100 Square Feet Minimum Order	X Total Number of Days	X \$1.10 =	
<input type="checkbox"/> Prior To Show Opening	<input type="checkbox"/> Prior to Second Day	<input type="checkbox"/> Prior to Third Day	

ADDITIONAL INFORMATION

General vacuuming of the show floor aisles is provided, however, cleaning of your exhibit area is not included in your exhibit space rental.

All carpets ordered from Levy Show Service Inc. are installed clean for your use. However, you may order cleaning services for debris created during set-up and show hours.

If you have any questions or need assistance with any items not listed, please contact our exhibits department.

A surcharge may be applied for any damage and or staining of exhibit space.

SPECIAL INSTRUCTIONS

Please indicate below any special cleaning requests or instructions you may have.

EXHIBITOR INFORMATION

COMPANY

CONTACT

BOOTH#

COST SUMMARY

RATE ADJUSTMENT	(OFFICE USE ONLY)	
25% CANCELLATION FEE	(OFFICE USE ONLY)	
SUBTOTAL		
P.S.T. 7%		
G.S.T. 5%		
TOTAL	GST#R103315057	

PLEASE REFER TO THE PAYMENT & CREDIT CARD CHARGE AUTHORIZATION FORM

****ORDERS WILL NOT BE PROCESSED WITHOUT PAYMENT****

STANDARD RATE will be applied to all orders not received and paid in full by **January 11, 2023**. We reserve the right to adjust orders calculated incorrectly.

A 25% CANCELLATION FEE will be applied to all orders received and then cancelled 3 weeks prior to install. If full service has been provided then 100% of original fee will be applied.

CLEAN 2023.cdr

LABOUR ORDER FORM & INVOICE

LEVY SHOW SERVICE INC. SUPERVISED LABOR

☐ MOVE IN ☐ MOVE OUT

LEVY SHOW SERVICE INC. WILL SUPERVISE labour to unpack and install display before exhibitor arrival at show site and/or dismantle and pack display after show closing.

A 25% (\$35.00 minimum) Surcharge will be added to the labour rates below for this professional supervision.

EXHIBITOR SUPERVISED LABOR

☐ MOVE IN ☐ MOVE OUT

EXHIBITOR WILL SUPERVISE the labourers provided by Levy Show Service Inc. for the installation and/or dismantle of the exhibit.

Supervisor's Name: _____

Contact Information: _____

Labour will be tentatively scheduled as per your indicated start time below. Please note that you will need to check in with our Levy Customer Service Desk on-site to advise that you are ready for your labourer(s) to begin.

LABOUR RATES

REGULAR TIME	8:00 AM - 4:00 PM Monday to Friday	118.00 per Hour
OVER TIME	4:00 PM - 6:00 PM Monday to Friday 8:00 AM - 4:00 PM Saturday	159.00 per Hour
DOUBLE TIME	All other hours including Sundays and Statutory Holidays	204.00 per Hour

ESTIMATED INSTALLATION REQUIREMENTS

REGULAR TIME	_____ Labourers	_____ Hours	118.00 per Hour	\$_____ Total	A minimum charge for labour is one (1) hour per labourer. Labour thereafter is charged in one-half (½) hour increments. Date Required _____ Start Time _____
OVER TIME	_____ Labourers	_____ Hours	159.00 per Hour	\$_____ Total	
DOUBLE TIME	_____ Labourers	_____ Hours	204.00 per Hour	\$_____ Total	

****A 25% (\$35.00 min.) surcharge will be added to labor rates for Levy Supervision****

ESTIMATED DISMANTLE REQUIREMENTS

REGULAR TIME	_____ Labourers	_____ Hours	118.00 per Hour	\$_____ Total	A minimum charge for labour is one (1) hour per labourer. Labour thereafter is charged in one-half (½) hour increments. Date Required _____ Start Time _____
OVER TIME	_____ Labourers	_____ Hours	159.00 per Hour	\$_____ Total	
DOUBLE TIME	_____ Labourers	_____ Hours	204.00 per Hour	\$_____ Total	

****A 25% (\$35.00 min.) surcharge will be added to labor rates for Levy Supervision****

INBOUND FREIGHT INFORMATION

Carrier	Date Shipped
Number of Pieces	Weight
Pro Number	Arrival Date (Target)
<input type="checkbox"/> Loose Display	<input type="checkbox"/> Crated Display

QUANTITY OF LADDERS REQUIRED (Optional)

_____ (indicate number)

EXHIBITOR INFORMATION

COMPANY

CONTACT

BOOTH#

SPECIAL SET UP INSTRUCTIONS

Please include set up plans, photos and install instructions for booth labour ordered.

Are set up plans attached? ☐ Yes ☐ No

If no, please provide an email address for Levy to contact you regarding booth set up and special requirements:

COST SUMMARY

RATE ADJUSTMENT	(OFFICE USE ONLY)	
CANCELLATION FEE	(OFFICE USE ONLY)	
TOTAL ESTIMATED LABOUR		
SUPERVISION 25% (\$35.00 min.)		
SUBTOTAL		
P.S.T. 7%		
G.S.T. 5%		
TOTAL GST #R103315057		

PLEASE REFER TO THE PAYMENT & CREDIT CARD CHARGE AUTHORIZATION FORM

****ORDERS WILL NOT BE PROCESSED WITHOUT PAYMENT****

TERMS & CONDITIONS Gratuities in any form, including cash, gifts or labour hours for work not actually performed are prohibited. We reserve the right to adjust orders calculated incorrectly.

CANCELLATION FEE A one (1) hour "per person, per hour" charge will be applied for all cancelled labour orders.

PAYMENT & LABOUR

The terms and conditions set forth below become part of the contractual agreement between Levy Show Service Inc and you, the EXHIBITOR. Acceptance of said terms and conditions will be construed when any of the following conditions are met:

- ~ **WHEN THE METHOD OF PAYMENT FORM IS SIGNED; OR**
- ~ **WHEN AN ORDER FOR LABOUR, SERVICES, AND/OR RENTAL EQUIPMENT IS PLACED BY AN EXHIBITOR WITH LEVY SHOW SERVICE INC.; OR**
- ~ **WHEN WORK IS PERFORMED ON BEHALF OF EXHIBITOR BY LABOUR SECURED THROUGH LEVY SHOW SERVICE INC.**

DEFINITIONS

"Levy Show Service Inc" ("LSS"), and any sub-contractors affiliated within the show. The term EXHIBITOR shall be construed within the meaning of this contract as the EXHIBITOR and/or its employees, agents, representatives, and/or any Exhibitor Appointed Contractor (E.A.C.).

PAYMENT TERMS

Full payment, including any applicable tax, is due in advance or at show site. All payments must be in CDN. or U.S. Funds and all cheques must be drawn on a Canadian or U.S. Bank. Orders received without advance payment or after the deadline date will incur additional [After Deadline] charges as indicated on each order form. All materials and equipment are on a rental basis for the duration of the show or event and remain the property of LSS except where specifically identified as a sale. All LSS rentals include delivery, installation and removal from EXHIBITOR's booth, unless stated otherwise. In case of cancellation, a one-hour "per person, per hour" charge will be applied to all labour, forklift and sign hanging orders that are not canceled in writing at least seven (7) days prior to the scheduled start time. If services have already been provided at the time of cancellation 100% of original fee will be applied. It is the EXHIBITOR'S responsibility to advise LSS Exhibitor Services personnel of any problem with any order, and to check invoices for accuracy prior to the close of the exhibit. If EXHIBITOR is exempt from payment of sales tax, LSS requires a British Columbia or Federal tax exemption number. For EXHIBITORS, LSS requires 100% prepayment of advance orders, and any orders or services placed at show site must be paid at the show. For all others, should there be any pre-approved unpaid balance after the close of the show, terms will be net, due and payable in CANADA, upon receipt of invoice. In the event of any dispute between EXHIBITOR and LSS relative to any loss, damage, or claim, such EXHIBITOR shall not be entitled to and shall not withhold payment, or any partial payment, or any partial payment, due to LSS relative to any services, as an offset against the amount of any alleged loss or damage. Any claim against LSS shall be considered a separate transaction, and shall be resolved on its own merits. LSS reserves the right to charge EXHIBITOR for the difference between the EXHIBITOR's estimate of charges and the actual charges incurred by the EXHIBITOR, or for any charges that LSS may be obligated to pay on behalf of the EXHIBITOR, including without limitation, any shipping charges.

LABOUR PROVIDED UNDER THE SUPERVISION OF LSS

RESPONSIBILITIES

LSS shall be responsible for the performance of labour provided under this option. LSS cannot assume responsibility for any acts of, or loss to, persons, parties and/or other contracting firms not under LSS's direct supervision and control. In no event shall LSS be liable for loss or damage caused by delay in labour beginning work when EXHIBITOR requests labour to begin later than the start of the working day. LSS shall not be responsible for loss, delay or damage due to strike, lockouts, and/or work stoppages, or other causes beyond LSS's reasonable control.

INDEMNIFICATION

LSS agrees to indemnify, hold harmless, and defend EXHIBITOR from and against any and all demands, claims, causes of action, fines, penalties, damages, liabilities, judgments, and expenses (including but not limited to reasonable attorneys' fees and investigation costs) for bodily injury, including any injury to LSS employees, or property damage arising out of work performed by labour provided by and supervised by LSS, except when EXHIBITOR exercises direction and/or control over the work being performed.

LABOUR PROVIDED UNDER THE SUPERVISION OF EXHIBITOR

RESPONSIBILITIES

EXHIBITOR shall be responsible for the performance of labour provided under this section. It is responsibility of EXHIBITOR to supervise labour secured through LSS in a reasonable manner as to prevent bodily injury and/or property damage and also to direct them to work in a manner that is in compliance with LSS Safe Work Rules and/or Federal, Province and Local ordinances, rules and/or regulations, including but not limited to Show or Facility Management Rules and/or Regulations. It is the responsibility of the EXHIBITOR to check in with the Service Desk to pick up labour, and to return to the Service Desk to release labour when the work is completed.

INDEMNIFICATION

EXHIBITOR agrees to indemnify, hold harmless, and defend LSS from and against any and all demands, claims, causes of action, fines, penalties, damages, liabilities, judgments, and expenses (including but not limited to reasonable attorneys' fees and investigation costs) for bodily injury, including any injury to LSS employees, and/or property damage arising out of work performed by labor provided by LSS but supervised by EXHIBITOR. Further, EXHIBITOR's indemnification of LSS includes any and all violations of Federal, Province or Local ordinances, "Show Regulations and/or Rules" as published and/or set forth by Facility or Show Management, and/or directing labour provided by LSS to work in a manner that violates any of the above rules, regulations, and/or ordinances.

IMPORTANT

PLEASE REFER TO LSS's MATERIAL HANDLING TERMS AND CONDITIONS FORM AS THEY RELATE TO MATERIAL HANDLING SERVICES. CONTRACTUAL TERMS DEPEND ON THE NATURE OF SERVICES SECURED BY EXHIBITOR THROUGH LSS. TERMS & CONDITIONS MAY VARY FOR EACH TYPE OF SERVICE ORDERED THROUGH LSS.

TERMS & CONDITIONS



REQUEST FOR SET-UP BY NON-OFFICIAL CONTRACTOR

The unpacking, erection, assembling, dismantling, and packing of displays and equipment should be done by the correct type of labour. Levy Show Service Inc., the official contractor, will have skilled craftsmen available to assist Exhibitors. Arrangements for labour can be made through Levy Show Service Inc. in advance. Labour forms are included in the Exhibitor Service Manual.

If an exhibit will be erected (etc.) by an outside supplier/contractor (e.g. a display house), then this form should be completed and sent to Levy Show Service Inc. no later than **January 11, 2023**. For services such as electrical, plumbing, telephone, drayage, rigging and booth cleaning, the contractor designated by Management must be used.

All agents or representatives who are performing services other than the Exhibitor's own employees must provide Levy Show Service Inc. with Certificates of Insurance naming **Levy Show Service Inc., Canadian Boat Shows and the VANCOUVER INTERNATIONAL BOAT SHOW** as additional insured's by **January 11, 2023**. These Certificates of Insurance must include public liability and property damage insurance for at least \$1,000,000, and workmen's compensation insurance in accordance with local law.

Exhibitors wishing to use a contractor other than Levy Show Service Inc. to set up and dismantle their exhibits must fill out this form and return to us no later than the January 11, 2023.

ORIGINAL CERTIFICATES ONLY PHOTOSTATS OR FACSIMILES WILL NOT BE ACCEPTED

Name of Exhibiting Company: _____ Booth Number: _____

Contracting Company Name: _____

Contracting Company Address: _____

City: _____ Prov/State: _____ PC/Zip: _____

Telephone: _____ Fax: _____

Estimated Arrival at Show _____ Number of Workers: _____

Authorized By: _____ Title: _____
(Sign & Print Name)

Date: _____ Signature: _____