

ANIREVO 2024
August 8 – 11, 2024
Vancouver Convention Centre - West
Vancouver, BC

Dear Exhibitor,

Levy Show Service Inc. is pleased to be appointed by Show Management as the Official General Service Contractor for **ANIREVO 2024**. We are excited to service you for this event. In the following pages, please find the necessary forms and vital information that will assist you with a successful exhibition experience.

We are offering a special discount rate on many of our services. To receive the discount rate, please submit your completed forms with full payment by **July 18, 2024**.

Should you have any questions, please feel free to contact our Customer Service Department at 604 277 1726 or operations@levyshow.com. Our team is readily available to assist you with your needs.

We look forward to speaking with you and wish you have a smooth and successful **ANIREVO 2024**.

Levy Show Service Inc.



SERVICE CONTRACTOR CONTACT:	LEVY SHOW SERVICE INC. 210 – 12011 Riverside Way Richmond, BC V6W 1K6 Tel: 604 277 1726 Fax: 604 277 1736 Email: operations@levyshow.com	
LOCATION:	Vancouver Convention Centre - West via Waterfront Road Truck Route 1055 Canada Place Vancouver, BC V6C 0C3	
EXHIBITOR MOVE-IN:	Thursday, August 8, 2024 Thursday, August 8, 2024 Friday, August 9, 2024	2:00 pm – 9:00 pm 5:00 pm – 9:00 pm (Artists move-in) 10:00 am – 11:00 am
EXHIBITION DATES:	Friday, August 9, 2024 Saturday, August 10, 2024 Sunday, August 11, 2024	11:00 am – 7:00 pm 11:00 am – 7:00 pm 11:00 am – 5:00 pm
EXHIBITOR MOVE-OUT:	Sunday, August 11, 2024	5:00 pm – 8:00 pm
BOOTH EQUIPMENT:	Each booth space includes the following: <ul style="list-style-type: none">• Refer to Show Management <p>If you require additional furnishings or services please complete and return the appropriate enclosed order form(s) and submit with completed credit card authorization form and full payment.</p>	
ELECTRICAL SERVICES:	Electrical services are to be ordered through and supplied by the Vancouver Convention Centre – West: https://www.vancouverconventioncentre.com/services/exhibitor-services	
DISCOUNT PRICE DEADLINE:	In order to receive the discount rates listed on the enclosed order forms, your PAID order must be received by July 18, 2024 .	
LEVY ONLINE ORDERING:	To access our online ordering system please visit https://www.expotoolkit.com/expotools/webforms/login.aspx?c=151&s=9095 <ul style="list-style-type: none">• you will be prompted to either register as a new exhibitor OR sign in as a returning exhibitor• if you do not know your booth number please enter “0” (zero)• online ordering available until August 1, 2024	
MATERIAL HANDLING:	To expedite the move-in process we highly recommend sending all materials to the Levy Advance Warehouse.	

Quick Facts continued...



In the event that a forklift is not available on show site for this particular exhibition, additional fees will apply if a forklift is required for your materials

SHIPPING:

Please refer to the Material Handling order form in this manual for further information and associated costs.

All **ADVANCE WAREHOUSE** shipments should arrive between **July 4, 2024 – August 1, 2024**. Shipments arriving before or after these dates will incur an early/late surcharge.

Shipments sent to the advance warehouse should be consigned as follows: (Labels are provided in the Material Handling Section of the exhibitor kit)

ANIREVO 2024
Exhibiting Company Name & Booth # ____
c/o Levy Show Service, Inc.
150 – 2060 Viceroy Place
Docks #5 - 8
Richmond, BC V6V 1Y9

All **DIRECT** shipments should not arrive prior to **2:00 pm on August 8, 2024**. Shipments arriving prior to this time will be refused.

Direct shipments should be consigned as follows:
(Labels are provided in the Material Handling section of the exhibitor kit)

ANIREVO 2024
Exhibiting Company Name & Booth # ____
Vancouver Convention Centre - West
c/o Levy Show Service, Inc.
via Waterfront Road Truck Route
1055 Canada Place
Vancouver, BC V6C 0C3

RESCUED FREIGHT:

All freight left on the show floor after 8:00 pm on August 11, 2024 will be rescued by the official carrier.

We wish you a successful show! If we can be of assistance, please contact the Levy Show Service Exhibitor Services Department at 604 277 1726 or email operations@levyshow.com.

PAYMENT & CREDIT CARD CHARGE AUTHORIZATION FORM

COMPANY					BOOTH NUMBER					All orders are regulated by LSS Payment Terms & Conditions as well as Material Handling / Exhibit Transportation Terms & Conditions.
ADDRESS		street	city	state/province	zip/postal code	country				
PHONE	FAX	P/O Number			E-MAIL					
AUTHORIZED CONTACT SIGNATURE X					AUTHORIZED CONTACT - PLEASE PRINT				DATE	

PAYMENT INFORMATION

<input type="checkbox"/> VISA		<input type="checkbox"/> MASTERCARD		<input type="checkbox"/> CHEQUE		EXPIRY DATE		CCVC	
ACCOUNT NUMBER									
CARDHOLDER'S BILLING ADDRESS					city	state/province	zip/postal code	country	
CARDHOLDER'S SIGNATURE X					CARDHOLDER'S NAME - PLEASE PRINT				

Please complete the REQUIRED order forms and submit with Payment & Credit Card Authorization Form and full payment. You may choose to pay by credit card and/or bank cheque, however, *we require your credit card authorization to be on file with LSS.* For your convenience, this form will be used as your authorization to charge any additional amounts incurred by you or your show representative, including material handling and labour charges.
 LEVY LOGISTICS - I hereby acknowledge and understand the terms & conditions and limits of liabilities provided for exhibit transportation and/or customs brokerage.

name / date

signature

CALCULATION OF ORDER FORMS

TOTAL FROM EACH ORDER FORM

Material Handling Order Form.....	\$	
Shipping and Customs Order Form.....	\$	
Carpet, Padding & Drape Rental Order Form.....	\$	
Table and Seating Rental Order Form.....	\$	
Accessories Rental Order Form.....	\$	
Prestige Furniture Rental Order Form.....	\$	
Hardwall System Rental Order Form.....	\$	
Graphics & Sign Order Form.....	\$	
Plant & Flower Rental Order Form.....	\$	
Audio Visual & Computer Order Form.....	\$	
Labour Order Form.....	\$	
FULL PAYMENT IN CANADIAN FUNDS		\$

To simplify payment, send one cheque payable to Levy Show Service Inc. for the entire amount or note the amount to be charged to your credit card.

Charge my credit card in the amount of	\$	
Cheque no. <input type="text"/>	Dated <input type="text"/>	in the amount of \$ <input type="text"/>



MATERIAL HANDLING FAQs

The following is a list of frequently asked questions pertaining to material handling and freight services. We strongly recommend that you read this document in its entirety to better familiarize yourself with the processes relating to material handling and freight services.

As the official service contractor, LEVY is the exclusive provider of freight services. Material handling includes unloading your exhibit material, storing up to 30 days in advance at the warehouse address, delivering to the booth, the handling of empty containers to and from storage, and removing of material from the booth for reloading onto outbound carriers. It should not be confused with the cost to transport your exhibit material to and from the convention or event. You have two options for shipping your advance freight — either to the warehouse or directly to show site.

HOW DO I SHIP TO THE ADVANCE WAREHOUSE?

- We will accept freight beginning 30 days prior to show move-in.
- To check on your freight arrival, call Exhibitor Services at the number listed on the Quick Facts.
- To ensure timely arrival of your materials at show site, freight should arrive by the deadline date listed on the Quick Facts and Shipping Instructions pages. Your freight will still be received after the deadline date, but additional charges will be incurred.
- The warehouse will receive shipments Monday through Friday, except holidays. Refer to the Shipping Instructions page for warehouse receiving hours.
- The warehouse will accept crates, cartons, skids, trunks/cases and carpets. Loose or pad-wrapped materials must be sent directly to show site.
- All shipments must have a bill of lading or delivery slip indicating the number of pieces, type of merchandise and weight.
- Certified weight tickets must accompany all shipments.
- Warehouse freight will be delivered to the booth prior to exhibitor setup.
- Please call the number located on the Quick Facts if you want to ship oversized material that requires special equipment to the warehouse.

HOW DO I SHIP TO SHOW SITE?

- Freight will be accepted only during exhibitor move-in. Please refer to the Quick Facts for the specific exhibitor move-in dates and times.
- All shipments must have a bill of lading or delivery slip indicating the number of pieces, type of merchandise and weight.
- Certified weight tickets must accompany all shipments.

WHAT ABOUT PREPAID OR COLLECT SHIPPING CHARGES?

- Collect shipments will be returned to the delivery carrier.
- To ensure that your freight does not arrive "collect," mark your bill of lading "prepaid."
- "Prepaid" designates that the transportation charges will be paid by the exhibitor or a third party.

HOW SHOULD I LABEL MY FREIGHT?

- The label should contain the exhibiting company name, the booth number and the name of the event.
- The specific shipping address for either the warehouse or show site can be found on the Quick Facts and Shipping Instructions pages.

HOW DO I ESTIMATE MY MATERIAL HANDLING CHARGES?

- Charges will be based on the weight of your shipment. Each shipment received is considered separately. The shipment weight will be multiplied by the applicable per pound rate with no round-ups. All shipments are subject to reweigh.
- On the Order Form, select whether the freight will arrive at the warehouse or be sent directly to show site.

Crated: material that is skidded or is in any type of shipping container that can be unloaded at the dock with no additional handling required.

- Add the late delivery charge listed on the Order Form if the shipment is accepted at the warehouse or at show site after the deadline date listed on the Quick Facts and Shipping Instructions pages.
- The above services, whether used completely or in part, are offered as a package and the charges will be based on the total inbound weight of the shipment.
- Shipments received without receipts or freight bills, such as UPS and Federal Express, will be delivered to the booth without guarantee of piece count or condition.

WHAT HAPPENS TO MY EMPTY CONTAINERS DURING THE SHOW?

- Pick up "Empty Labels" at the Service Center. Place a label on each container. Labeled containers will be picked up periodically and stored in non-accessible storage during the show.
- At the close of the show, the empty containers will be returned to the booth in random order. Depending on the size of the show, this process may take several hours.
- *Please note that LEVY will assume no liability for interrupted travel plans due to the length of time required for the empty container return. It is the responsibility of the exhibitor to schedule travel plans accordingly.*

HOW DO I PROTECT MY MATERIALS AFTER THEY ARE DELIVERED TO THE SHOW OR BEFORE THEY ARE PICKED UP AFTER THE SHOW?

- Consistent with trade show industry practices, there may be a lapse of time between the delivery of your shipment(s) to your booth and your arrival. The same is true for the outbound phase of the show — the time between your departure and the actual pick-up of your materials. During these times, your materials will be left unattended. We recommend that you arrange for a representative to stay with your materials or that you hire security services to safeguard your materials.

HOW DO I SHIP MY MATERIALS AFTER THE CLOSE OF THE SHOW?

- Each shipment must have a completed Material Handling Agreement in order to ship materials from the show. All pieces must be labeled individually.
- To save time, complete and submit the Outbound Shipping Form in advance, or you may contact the Service Center at show site for your shipping documents. The Material Handling Agreement and labels will be processed and available prior to show closing.
- After materials are packed, labeled, and ready to be shipped, the completed Material Handling Agreement must be turned in at the Service Center.
- Call your designated carrier with pick-up information. Please refer to the Quick Facts and Shipping Instructions pages for specific dates and times. In the event your selected carrier fails to show on final move-out day, your shipment will either be rerouted to LEVY's carrier choice or delivered back to the warehouse at exhibitor's expense.
- For your convenience, show-recommended carriers will be on site to handle outbound transportation.

WHERE DO I GET A FORKLIFT?

- Forklift orders to install or dismantle your booth after materials are delivered may be ordered in advance or at show site. We recommend that you order in advance to avoid additional charges at show site. Refer to the Order Form for available equipment.
- Advance and show-site orders for equipment and labor will be dispatched once a company representative signs the labor order at the Service Center.
- Start time is guaranteed only when equipment is requested for the start of the working day.

DO I NEED INSURANCE?

- Be sure your materials are insured from the time they leave your firm until they are returned after the show. It is suggested that exhibitors arrange all-risk coverage. This can be done by riders to your existing policies.
- All materials handled by LEVY are subject to the enclosed Terms and Conditions.

OTHER AVAILABLE SERVICES (may not be available in all locations)

- Cranes
- Scissor lifts, condors
- Access storage at show site
- Exhibit transportation services (see enclosed Levy Logistics form)
- Security storage at show site
- Short-term and long-term warehouse storage
- Local pick-up and delivery

SOLO RATE MATERIAL HANDLING ORDER FORM & INVOICE

SOLO RATE MATERIAL HANDLING SERVICES

DUE TO LIMITED MATERIAL HANDLING SERVICES AT THE VANCOUVER CONVENTION CENTRE - WEST, WE HIGHLY RECOMMEND THAT ALL MATERIALS BE SHIPPED TO OUR ADVANCE WAREHOUSE IN ORDER TO AVOID POTENTIAL DELAYS IN UNLOADING AT SHOW SITE.

Levy Show Service Inc. is the exclusive provider of Solo Rate Material Handling Services for ANIREVO 2024. Solo Rate Material Handling Services include:

- receiving and unloading your exhibit materials at the advance warehouse
- storage of exhibit materials for up to 30 days prior to the show
- transportation to show site, unloading and delivery of exhibit materials to your booth space
- removal and storage of your empty containers during the event
- return of your empty containers at the close of the event
- outbound loading of your materials onto your carrier vehicle of choice at show site

You have the choice to ship to the advance warehouse prior to the show or to ship directly to the show site where your materials must arrive within the exhibitor move-in dates and times. Please be aware the warehousing for refrigerated or frozen items is unavailable. For Canada Post & USPS shipments, additional charges will apply if pick-up at a post office is required. **Please note** that shipments greater than 10,000 lbs or that exceed 24 lineal feet of trailer space will be refused at the advance warehouse and must be sent directly to show site

DISCLAIMER: Amazon shipments or any shipments received from Canada Post or USPS that exceed 2 lbs will not be accepted.

SOLO RATE MATERIAL HANDLING DESCRIPTIONS

Normal Warehouse Hours for Receiving Freight: 9:00 AM to 3:00 PM Monday through Friday, Holidays excluded.

Advance Receiving: Shipment(s) received at the Advance Warehouse *between July 4, 2024 and August 1, 2024.*

Show Site Receiving: Shipment(s) shipped to and received at the **Vancouver Convention Centre - West**. Shipments cannot be received at the **Vancouver Convention Centre - West** prior to **2:00 pm** on **August 8, 2024.**

Early/Late to Warehouse & Off Target: Shipment(s) received at the Advance Warehouse *prior to July 4, 2024 or after August 1, 2024.* Also, any shipments received at show site prior to **2:00 pm** on **August 8, 2024.**

Small Package: Single piece shipment under 30 lbs.

Dedicated Delivery from Advance Warehouse: Any freight received at the Advance Warehouse after **August 7, 2024** will incur a \$495.00 same-day delivery fee if a dedicated truck is required to deliver freight to show site.

Advance and Direct Shipment Rates	Price Per lb. (Minimum 200 lbs)
Advance Warehouse & Show Site Receiving Rate	\$1.60
Early/Late to Warehouse & Off Target Rate.....	\$2.25
Small Package Rate (single piece shipment under 30 lbs).....	\$75.00
Dedicated Same-Day Delivery from Advance Warehouse (in addition to material handling rates)	\$495.00 (flat fee)

DISCLAIMER: In the event that a forklift is not available on show site for this particular exhibition, additional fees will apply if a forklift is required for your materials. The maximum weight capacity of the supplied forklifts are 5,000 lbs. Should you require a larger forklift, please contact our operations department at 604 277 1726 or by email at operations@levyshow.com, as the service needs to be ordered in advance.

PLEASE NOTE:

Acceptance of Terms & Conditions will be construed when the Material Handling Service Agreement is signed; or when exhibitor's materials are delivered to Levy Show Service Inc. warehouse or to a SHOW / EXPOSITION SITE for which Levy Show Service Inc. is the official show contractor.

Description of shipment	Advance or Show Site (please indicate)	Weight in LBS	Price Per lb.	Estimated Total Charges
1 crate, 2 boxes	Advance receiving	298	\$1.60	\$476.80

EXHIBITOR INFORMATION

COMPANY

CONTACT

BOOTH#

RATE ADJUSTMENT	(OFFICE USE ONLY)	
SUBTOTAL		
G.S.T. 5%		
TOTAL	GST#R103315057	

PLEASE REFER TO THE PAYMENT & CREDIT CARD CHARGE AUTHORIZATION FORM

****ORDERS WILL NOT BE PROCESSED WITHOUT PAYMENT****

ADVANCE RECEIVING INFORMATION & INSTRUCTIONS

SHIPMENTS CAN BE SENT DIRECTLY TO THE SHOW SITE ON MOVE-IN DAY, OR TO THE ADVANCE WAREHOUSE UP TO THIRTY DAYS PRIOR TO MOVE-IN.

All freight shipped to the advance receiving warehouse must be properly crated, boxed, or stretch wrapped on pallets. Shipments that are greater than 10,000 lbs or that exceed 24 lineal feet of trailer space will be refused at the advance warehouse and must be sent directly to show site.

****PLEASE NOTE:** *warehousing for refrigerated or frozen items is unavailable.*

ADVANCE RECEIVING

For advance receiving, mail or fax the Material Handling Order Form & Invoice with pre-payment to LEVY SHOW SERVICE INC. Shipments sent collect **WILL NOT** be accepted.

Advance receiving includes the following:

- receiving your material at the warehouse up to thirty days in advance of the move-in day
 - delivering the shipment to your booth at the facility
 - removing empty crates from your booth to a designated storage area
 - returning your empty crates to your booth at the close of the show
 - loading your crates onto your designated carrier at the close of the show
- ** please note that shipments are not brought back to the advance warehouse after the close of the show****

The material handling services provided by LEVY SHOW SERVICE INC. end with the close of the show. It is the responsibility of the exhibitor to make appropriate arrangements with a carrier to pick up any shipments at the venue following the close of the show. Please make special note of the allotted move-out times and days, and confirm with your carrier that they are able to meet these allotted times.

Should you require post-show warehousing, please contact our Logistics Department at acheng@levyshow.com for details.

Please remove all old shipping labels and ensure that all freight destined for the advance warehouse is labeled with the following information:

ANIREVO 2024
COMPANY NAME & BOOTH #
c/o Levy Show Service Inc.
150 - 2060 Viceroy Place
Docks #5 - 8
Richmond, BC V6V 1Y9

Shipments may be sent to the advance warehouse up to thirty days prior to the move-in day for the show. All shipments however, must be received at the warehouse a minimum of five business days in advance of the show move-in date. All shipments must be received at the advance warehouse between the hours of 09:00 and 15:00, Monday to Friday, no earlier than **July 4, 2024** and no later than **August 1, 2024**. Shipments received before or after these dates will be subject to the rate of \$2.25 per pound (minimum 200lbs).

Shipments must include an official weight ticket or bill of lading.

ANY SHIPMENT(S) RECEIVED AT THE ADVANCE WAREHOUSE AFTER AUGUST 7, 2024 WILL INCUR A CHARGE OF \$495.00 IN ADDITION TO LATE TO WAREHOUSE FEES IF A DEDICATED TRUCK IS REQUIRED TO RETRIEVE YOUR SHIPMENT.

PLEASE NOTE: *Canada Post or USPS shipments that require post office pick-up will incur additional charges.*

****Amazon shipments or shipments received from Canada Post or USPS that exceed 2 lbs will not be accepted at the advance warehouse****

PLEASE SEE NEXT PAGE FOR SHOW SITE SHIPPING INSTRUCTIONS...

SHOW SITE RECEIVING INFORMATION & INSTRUCTIONS

SHOW SITE RECEIVING

For show site receiving, mail or fax the Material Handling Order Form & Invoice with pre-payment to LEVY SHOW SERVICE INC. Shipments sent collect **WILL NOT** be accepted.

Show site receiving includes the following:

- receiving and signing for your shipment on your behalf
- delivering the shipment to your booth at the facility
- removing empty crates from your booth to a designated storage area
- returning your empty crates to your booth at the close of the show
- loading your crates onto your designated carrier at the close of the show

*** please note that shipments are not brought back to the advance warehouse after the close of the show***

The material handling services provided by LEVY SHOW SERVICE INC. end with the close of the show. It is the responsibility of the exhibitor to make appropriate arrangements with a carrier to pick up any shipments at the venue following the close of the show. Please make special note of the allotted move-out times and days, and confirm with your carrier that they are able to meet these allotted times.

Should you require post-show warehousing, please contact our Logistics Department at acheng@levyshow.com for details.

Please remove all old shipping labels and ensure that all freight destined for show site receiving is labeled with the following information:

ANIREVO 2024
COMPANY NAME & BOOTH #
Vancouver Convention Centre - West
c/o Levy Show Service, Inc.
via Waterfront Road Truck Route
1055 Canada Place
Vancouver, BC V6C 0C3

PLEASE NOTE THAT SHIPMENTS CANNOT BE RECEIVED AT THE VENUE PRIOR TO 2:00 PM ON AUGUST 8, 2024.

Shipments must include an official weight ticket or bill of lading.

LIMITS OF LIABILITY

See Material Handling Terms & Conditions Sheet enclosed.

MATERIAL HANDLING

TERMS & CONDITIONS

Acceptance of said terms and conditions will be constructed when any of the following conditions are met:

- ~ **THE MATERIAL HANDLING ORDER FORM AND INVOICE IS SIGNED; OR**
- ~ **WHEN EXHIBITOR'S MATERIALS ARE DELIVERED TO LSS'S WAREHOUSE OR TO A SHOW/ EXPOSITION SITE FOR WHICH LEVY SHOW SERVICE INC. IS THE OFFICIAL SHOW CONTRACTORS; OR**
- ~ **WHEN AN ORDER FOR LABOUR AND/ OR RENTAL EQUIPMENT IS PLACED BY AN EXHIBITOR WITH LEVY SHOW SERVICE INC.**

- 1. DEFINITIONS.** "Levy Show Service Inc" ("LSS"), and any sub-contractors affiliated within the show.
- 2. PACKAGING AND CRATES.** LSS shall not be responsible for damage to loose, uncrated materials, padwrapped or shrink-wrapped materials, glass breakage, concealed damage, carpets in bags or poly, or materials improperly packed. In addition, LSS shall not be responsible for crates and packaging which are unsuitable for handling, in poor condition, or have prior damage. Crated and packaging should be of a design to adequately protect contents for handling by forklift and similar means.
- 3. EMPTY CONTAINERS.** Empty container labels will be available at the show site service desk. Affixing labels to the containers is the sole responsibility of EXHIBITOR or his representative. All previous labels must be removed or obliterated. LSS assumes no responsibility for: Error in the above procedures; Removal of containers with old empty labels & without LSS labels; or Improper information on empty labels. LSS WILL NOT BE LIABLE FOR LOSS OR DAMAGE TO CRATES AND CONTAINERS OR THEIR CONTENTS WHEN SAID ITEMS ARE IN EMPTY CONTAINER STORAGE.
- 4. INBOUND SHIPMENT(S).** Consistent with trade show industry practices, there may be a lapse of time between the delivery of shipment(s) to the booth and the arrival of EXHIBITOR or his representative, and during such time the materials will be left unattended. LSS WILL NOT BE RESPONSIBLE OR LIABLE FOR ANY LOSS, DAMAGE, THEFT, OR DISAPPEARANCE OF EXHIBITOR'S MATERIALS AFTER SAME HAVE BEEN DELIVERED TO EXHIBITOR'S BOOTH AT SHOW SITE. LSS highly recommends the securing of security services from the Facility or Show Management. If any employee of LSS or its subcontractors shall sign a delivery receipt, bill of lading or other document, we agree that LSS or its subcontractor will do so as the Exhibitor's agent, and the Exhibitor accepts the responsibility thereof.
- 5. OUTBOUND SHIPMENT(S).** Consistent with trade show industry practices, there may be a lapse of time between the completions of packing and the actual pickup of materials from the booths for loading onto a carrier and during such time the materials will be left unattended. LSS WILL NOT BE RESPONSIBLE OR LIABLE FOR ANY LOSS, DAMAGE, THEFT, OR DISAPPEARANCE OF EXHIBITOR'S MATERIALS BEFORE SAME HAVE BEEN PICKED UP FOR RELOADING AT THE CONCLUSION OF THE EVENT. LSS highly recommends the securing of security services from Facility or Show Management. All Material Handling Agreements submitted to LSS by EXHIBITOR will be checked at the time of pickup from booth and corrections will be made where discrepancies exist between the quantities of times listed by EXHIBITOR and the actual count of such items in the booth at the time of pickup. In order to expedite removal of materials from the show site, LSS shall have the authority to change designated carriers, if such carriers do not pick up on time. Where no disposition is made by the Exhibitor, materials will be routed by LSS at show site. LSS assumes no liability as a result of such re-routing or handling.
- 6. LSS'S RESPONSIBILITIES.** LSS shall be responsible only for those services which it directly provides. LSS assumes no responsibility for any persons, parties, or other contracting firms not under LSS's direct supervision and control. LSS shall not be responsible for loss, delay, or damage due to strike, lockouts, work stoppages, natural elements, vandalism, acts of God, civil disturbances, power failure, explosion, acts of terrorism or war, other causes beyond LSS's reasonable control, nor for ordinary wear & tear in the handling of materials. LSS and its subcontractors shall not be held liable for any damage incurred during the handling of equipment requiring special devices to properly load, place or reload unless advance notice has been given to LSS in time to obtain the proper equipment.
- 7. INSURANCE.** It is understood that LSS is not an insurer. Insurance on exhibit materials, if any, shall be obtained by EXHIBITOR in amounts and for perils determined by EXHIBITOR. EXHIBITOR agrees to provide LSS with a release of subrogation to the extent of any insurance settlement received.
- 8. CLAIM(S) FOR LOSS.** Claims for loss or damage must be submitted to LSS by the close of the show. No suit or action shall be brought against LSS or its subcontractors more than one year after the cause of action.
 - A. PAYMENT FOR SERVICES MAY NOT BE WITHHELD.** In the event of any dispute between the EXHIBITOR shall not be entitled to and shall not withhold payment, or any partial payment due to LSS for its services, as an offset against the amount of any alleged loss or damage.
 - B. MAXIMUM RECOVERY.** If found damaged LSS's sole and exclusive MAXIMUM liability for loss or damage to EXHIBITOR's materials and EXHIBITOR's sole and exclusive remedy is limited to \$.30 per pound article with a maximum liability of \$50.00 per item, or \$1,000.00 per shipment.
- 9. JURISDICTION.** THIS CONTRACT SHALL BE CONSTRUED UNDER THE LAWS OF THE PROVINCE OF BC WITHOUT GIVING EFFECT TO ITS CONFLICT OF LAWS RULES. EXCLUSIVE VENUE FOR ALL DISPUTES ARISING OUT OF OR RELATING TO THIS CONTRACT SHALL RESIDE IN A COURT OF COMPETENT JURISDICTION IN VANCOUVER, BC.
- 10. INDEMNIFICATION.** EXHIBITOR agrees to indemnify, forever hold harmless and defend LSS, its employees, directors, officers, and agents from and against any and all demands, claims, causes of action, fines, penalties, damages (including consequential), liability, judgements, and expenses (including but not limited to reasonable attorney's fees and investigation costs) on account of personal injury, death, or damage to or loss of property or profits arising out of, or contributed to, by any of the following:
 - EXHIBITOR's negligent supervision of any labour secured through LSS, or the negligent supervision of such labour by any of EXHIBITOR's employees, agents, representative, customers, invitees and/or Exhibitor Appointed Contractor (EAC).
 - EXHIBITOR's negligence, willful misconduct, or deliberate act of EXHIBITOR's employees, agents, representatives, customers, invitees and/or any Exhibitor Appointed Contractor (EAC) at the show or exposition to which this contract relates.
 - EXHIBITOR's violation of CANADIAN or Local ordinances or the violation of Show Regulations and/or Rules as published and set forth by Facility and/or Show Management.
 - EXHIBITOR's inclusion of illegal substances, hazardous materials or waste in any shipment placed with LSS and for the violation of the representations and warranties made regarding hazardous materials made on the front of this Agreement.
- 11. MISCELLANEOUS.** EXHIBITOR, as a material part of the consideration LSS for material handling and transportation services, waives and releases all claims against LSS, its employees, agents, officers, and directors, with respect to all matters for which LSS has disclaimed liability pursuant to the provisions of this contract. The EXHIBITOR acknowledges that he or she has read this agreement, understands it and agrees to be bound by its terms, and further agrees that it is the complete and exclusive agreement between the parties. The invalidity or enforceability of any provision hereof shall not affect, modify, or impair the validity and enforceability of all provisions herein.





ADVANCE WAREHOUSE

ADVANCE WAREHOUSE

TO: _____
(EXHIBITOR NAME)

BOOTH # _____

**c/o Levy Show Service Inc.
150 - 2060 Viceroy Place
Docks #5 - 8
Richmond, BC V6V 1Y9**

EVENT NAME:

ANIREVO 2024

NO. _____ # of _____ PCS.

TO: _____
(EXHIBITOR NAME)

BOOTH # _____

**c/o Levy Show Service Inc.
150 - 2060 Viceroy Place
Docks #5 - 8
Richmond, BC V6V 1Y9**

EVENT NAME:

ANIREVO 2024

NO. _____ # of _____ PCS.

The above labels are provided for your convenience.
Place one on each piece shipped to the ADVANCE WAREHOUSE.
If more labels are needed, copies are acceptable.



SHOW SITE

TO: _____
(EXHIBITOR NAME)

BOOTH # _____

**Vancouver Convention Centre - West
c/o Levy Show Service Inc.
via Waterfront Road Truck Route
1055 Canada Place
Vancouver, BC V6C 0C3**

EVENT NAME:

ANIREVO 2024

NO. _____ # of _____ PCS.



SHOW SITE

TO: _____
(EXHIBITOR NAME)

BOOTH # _____

**Vancouver Convention Centre - West
c/o Levy Show Service Inc.
via Waterfront Road Truck Route
1055 Canada Place
Vancouver, BC V6C 0C3**

EVENT NAME:

ANIREVO 2024

NO. _____ # of _____ PCS.

The above labels are provided for your convenience.
Place one on each piece shipped to the SHOW SITE.
If more labels are needed, copies are acceptable.



HEAD OFFICE
210 - 12011 Riverside Way
Richmond, BC
Canada V6W 1K6
Fax: 604 277 1736
Telephone: 604 277 1726
Email: acheng@levyshow.com



Levy Show Service Inc. has been appointed the official service contractor for **ANIREVO 2024**. Our experienced logistics staff will support you with your inbound and outbound shipping, post show warehousing and Customs clearance.

Here are some of the best reasons for acquiring Levy's Exhibit Transportation service:

- Seamless Service from pick up at your location and delivery right to your booth prior to exhibitor move-in
- One invoice listing all your show services ordered
- Paperwork completed for you including pre-printed shipping labels
- Limitless options for shipping, just ask!
- Our Levy Logistics team are friendly and experienced providing you with invaluable service 7 days a week
- Our Levy team are specialists in the meeting & events industry

Our goal is for your event to be a success.

Please call today 604 277 1726 or email acheng@levyshow.com

We look forward to hearing from you.

EXHIBIT TRANSPORTATION

LEVY LOGISTICS INFORMATION AND ORDER FORM

Please accept this form as your authority to provide Shipping and/or Customs Services.
We wish to use the following services:

☐ Shipping & Customs ☐ Shipping Only ☐ Customs Only ☐ Post Event
☐ Short Term Storage

SHIPPER INFORMATION

IF SHIPPING FROM ANOTHER SHOW PLEASE CONTACT US DIRECTLY

Company/Exhibitor		Booth #	Shipping from a show YES <input type="checkbox"/> NO <input type="checkbox"/>		Booth #
Facility/Business Picking Up From		Contact Name	Show Name		
City	Address				Floor
Country	Pr/St	Postal Code			
Phone	Fax	E-Mail			



Tailgate PICK UP required?

☐ YES ☐ NO

Loading Dock?

☐ YES ☐ NO

PICK UP Details:

Other: (ie: Residential, Inside P/U) _____

Date: _____ Time: _____

DESTINATION INFORMATION AFTER SHOW

IF SHIPPING TO ANOTHER SHOW PLEASE FILL IN THIS SECTION

Company/Exhibitor		Shipping to a show YES <input type="checkbox"/> NO <input type="checkbox"/>		Booth #
Facility/Business Delivering To		Address / Floor		Show Name
City	Pr/St	Postal/Zip Code	Move-In Date	Move-In Times
Country	Contact	Show Contractor	Marshalling Yard YES <input type="checkbox"/> NO <input type="checkbox"/>	
Phone	Fax	I will be shipping to the Advanced Warehouse YES <input type="checkbox"/> NO <input type="checkbox"/>		



Tailgate DELIVERY required?

☐ YES ☐ NO

Loading Dock?

☐ YES ☐ NO

DROP OFF Details:

Other: (ie: Residential, Inside Delivery) _____

Date: _____ Time: _____

CUSTOMS INFORMATION

Customs Broker	Customs Broker contact	Customs Broker Phone	Customs paperwork attached <input type="checkbox"/> YES <input type="checkbox"/> NO
----------------	------------------------	----------------------	--

☐ ONE WAY

☐ ROUND TRIP

☐ REGULAR GROUND

☐ EXPEDITED GROUND

SHIPMENT INFORMATION

Description of Packages and Contents	# of pieces	Dimensions (L) X (W) X (H)	Weight lbs

DO YOU REQUIRE CARGO INSURANCE? ☐ YES ☐ NO ____ (initial)

You must check one of these boxes above and initial. NOTE: if the request for cargo insurance is not indicated and initialed, your shipment will not be insured. If you have checked Yes, please continue to next page.

LEVY LOGISTICS CARGO INSURANCE

Exhibiting Company Name			Booth #
Contact Name	Phone	Email	

How do you know your trade show materials will be protected?

Add cargo insurance to your shipment for peace of mind.

If you are requesting Cargo Insurance, please complete the following application:				
For Shipment valued C\$1000.00 and over deductible amount is C\$500.00. For shipment valued under C\$1000.00 deductible amount is C\$250.00.				
Trip	Deductible	Coverage Limit (In CAD)	Rate *	Premium
<input type="checkbox"/> Inbound: One Way shipping into the event ** Maximum Standard Limit C\$50,000.00	C\$500.00/C\$250.00		.005	
<input type="checkbox"/> Outbound: One Way shipping out of the event ** Maximum Standard Limit C\$50,000.00	C\$500.00/C\$250.00		.005	
CLAIMS: Report all claims to CNA Continental Casualty Company Phone: 1-800-668-6100 Subject to the terms and conditions of Cargo Policy #819218		Premium Total (Minimum Premium C\$50)		
		Administration Fee		C\$ 50.00
		Total Payable		
** Maximum Limit is C\$50,000.00.				
Administrative Use	Cargo Policy Number 819218	Certificate Number:		

PLEASE REFER TO THE PAYMENT & CREDIT CARD CHARGE AUTHORIZATION FORM

****ORDERS WILL NOT BE PROCESSED WITHOUT PAYMENT****



CANADA CUSTOMS BROKERAGE

As the official contractor for **ANIREVO 2024** we understand that planning a successful event begins long before you step onto the show floor. International shipping can be daunting but we are here to help. We will facilitate all your customs clearance needs.

Here are some of the best reasons why Levy Logistics will provide you with peace of mind when it comes to customs clearance.

- Assistance with shipping and customs documentation by our experienced logistics specialists
- Streamlined integration with our shipping service
- Knowledgeable staff providing 24 hour / 7 day support for your event
- On-site customer service during move-in and move-out

Call us today 604 277 1726 or email acheng@levyshow.com and will get you started on the right track by helping you plan your international shipping stress free! We want your event to be a great success!

***for qualified shipments*



CANADA CUSTOMS INVOICE
FACTURE DES DOUANES CANADIENNES

1. Vendor (name and address) - Vendeur (nom et adresse)		2. Date of direct shipment to Canada - Date d'expédition directe vers le Canada	
		3. Other references (include purchaser's order No.) Autres références (inclure le n° de commande de l'acheteur)	
4. Consignee (name and address) - Destinataire (nom et adresse)		5. Purchaser's name and address (if other than consignee) Nom et adresse de l'acheteur (s'il diffère du destinataire)	
		6. Country of transshipment - Pays de transbordement	
		7. Country of origin of goods Pays d'origine des marchandises	IF SHIPMENT INCLUDES GOODS OF DIFFERENT ORIGINS ENTER ORIGINS AGAINST ITEMS IN 12. SI L'EXPÉDITION COMPREND DES MARCHANDISES D'ORIGINES DIFFÉRENTES, PRÉCISEZ LEUR PROVENANCE EN 12.
8. Transportation: Give mode and place of direct shipment to Canada Transport : Précisez mode et point d'expédition directe vers le Canada		9. Conditions of sale and terms of payment (i.e. sale, consignment shipment, leased goods, etc.) Conditions de vente et modalités de paiement (p. ex. vente, expédition en consignation, location de marchandises, etc.)	
		10. Currency of settlement - Devises du paiement	
11. Number of packages Nombre de colis	12. Specification of commodities (kind of packages, marks and numbers, general description and characteristics, i.e., grade, quality) Désignation des articles (nature des colis, marques et numéros, description générale et caractéristiques, p. ex. classe, qualité)	13. Quantity (state unit) Quantité (précisez l'unité)	14. Unit price Prix unitaire
			15. Total
18. If any of fields 1 to 17 are included on an attached commercial invoice, check this box Si tout renseignement relativement aux zones 1 à 17 figure sur une ou des factures commerciales ci-attachées, cochez cette case Commercial Invoice No. - N° de la facture commerciale		16. Total weight - Poids total Net Gross - Brut	
		17. Invoice total Total de la facture	
19. Exporter's name and address (if other than vendor) Nom et adresse de l'exportateur (s'il diffère du vendeur)		20. Originator (name and address) - Expéditeur d'origine (nom et adresse)	
21. Agency ruling (if applicable) - Décision de l'Agence (s'il y a lieu)		22. If fields 23 to 25 are not applicable, check this box Si les zones 23 à 25 sont sans objet, cochez cette case	
23. If included in field 17 indicate amount: Si compris dans le total à la zone 17, précisez : (i) Transportation charges, expenses and insurance from the place of direct shipment to Canada Les frais de transport, dépenses et assurances à partir du point d'expédition directe vers le Canada (ii) Costs for construction, erection and assembly incurred after importation into Canada Les coûts de construction, d'érection et d'assemblage après importation au Canada (iii) Export packing Le coût de l'emballage d'exportation		24. If not included in field 17 indicate amount: Si non compris dans le total à la zone 17, précisez : (i) Transportation charges, expenses and insurance to the place of direct shipment to Canada Les frais de transport, dépenses et assurances jusqu'au point d'expédition directe vers le Canada (ii) Amounts for commissions other than buying commissions Les commissions autres que celles versées pour l'achat (iii) Export packing Le coût de l'emballage d'exportation	
		25. Check (if applicable): Cochez (s'il y a lieu) : (i) Royalty payments or subsequent proceeds are paid or payable by the purchaser Des redevances ou produits ont été ou seront versés par l'acheteur (ii) The purchaser has supplied goods or services for use in the production of these goods L'acheteur a fourni des marchandises ou des services pour la production de ces marchandises	

Dans ce formulaire, toutes les expressions désignant des personnes visent à la fois les hommes et les femmes.



CANADA CUSTOMS INVOICE
FACTURE DES DOUANES CANADIENNES

1. Vendor (name and address) - Vendeur (nom et adresse) ABC Company Ltd. 123 Foster St. San Diego, CA USA 123409		2. Date of direct shipment to Canada - Date d'expédition directe vers le Canada 2015/10/27	
		3. Other references (include purchaser's order No.) Autres références (inclure le n° de commande de l'acheteur) Show name	
4. Consignee (name and address) - Destinataire (nom et adresse) ABC Comp. (Your company name) Show Name c/o Levy Show Facility Address City, Province Postal Code		5. Purchaser's name and address (if other than consignee) Nom et adresse de l'acheteur (s'il diffère du destinataire) Same.	
		6. Country of transshipment - Pays de transbordement N/A	
		7. Country of origin of goods Pays d'origine des marchandises USA	IF SHIPMENT INCLUDES GOODS OF DIFFERENT ORIGINS ENTER ORIGINS AGAINST ITEMS IN 12. SI L'EXPÉDITION COMPREND DES MARCHANDISES D'ORIGINES DIFFÉRENTES, PRÉCISEZ LEUR PROVENANCE EN 12.
8. Transportation: Give mode and place of direct shipment to Canada Transport : Précisez mode et point d'expédition directe vers le Canada Levy Show		9. Conditions of sale and terms of payment (i.e. sale, consignment shipment, leased goods, etc.) Conditions de vente et modalités de paiement (p. ex. vente, expédition en consignation, location de marchandises, etc.) Trade Show Goods Returning	
		10. Currency of settlement - Devises du paiement USD	
11. Number of packages Nombre de colis 5	12. Specification of commodities (kind of packages, marks and numbers, general description and characteristics, i.e., grade, quality) Désignation des articles (nature des colis, marques et numéros, description générale et caractéristiques, p. ex. classe, qualité) Display Booth Advertising Brochures - give-aways Plastic key chains - give-aways Computer Monitor	13. Quantity (state unit) Quantité (précisez l'unité) 1 1000 50 2 2	14. Unit price Prix unitaire 5,000.00 0.10 0.50 1,000.00 500.00
		15. Total 5,000.00 100.00 25.00 2,000.00 1,000.00	
18. If any of fields 1 to 17 are included on an attached commercial invoice, check this box Si tout renseignement relativement aux zones 1 à 17 figure sur une ou des factures commerciales ci-attachées, cochez cette case Commercial Invoice No. - N° de la facture commerciale <input type="checkbox"/>		16. Total weight - Poids total Net Gross - Brut 300	
		17. Invoice total Total de la facture 8,125.00	
19. Exporter's name and address (if other than vendor) Nom et adresse de l'exportateur (s'il diffère du vendeur)		20. Originator (name and address) - Expéditeur d'origine (nom et adresse) ABC Company Ltd. 123 Foster St. San Diego, CA USA 123409	
21. Agency ruling (if applicable) - Décision de l'Agence (s'il y a lieu)		22. If fields 23 to 25 are not applicable, check this box Si les zones 23 à 25 sont sans objet, cochez cette case <input checked="" type="checkbox"/>	
23. If included in field 17 indicate amount: Si compris dans le total à la zone 17, précisez : (i) Transportation charges, expenses and insurance from the place of direct shipment to Canada Les frais de transport, dépenses et assurances à partir du point d'expédition directe vers le Canada (ii) Costs for construction, erection and assembly incurred after importation into Canada Les coûts de construction, d'érection et d'assemblage après importation au Canada (iii) Export packing Le coût de l'emballage d'exportation		24. If not included in field 17 indicate amount: Si non compris dans le total à la zone 17, précisez : (i) Transportation charges, expenses and insurance to the place of direct shipment to Canada Les frais de transport, dépenses et assurances jusqu'au point d'expédition directe vers le Canada (ii) Amounts for commissions other than buying commissions Les commissions autres que celles versées pour l'achat (iii) Export packing Le coût de l'emballage d'exportation	
		25. Check (if applicable): Cochez (s'il y a lieu): (i) Royalty payments or subsequent proceeds are paid or payable by the purchaser Des redevances ou produits ont été ou seront versés par l'acheteur (ii) The purchaser has supplied goods or services for use in the production of these goods L'acheteur a fourni des marchandises ou des services pour la production de ces marchandises	

Dans ce formulaire, toutes les expressions désignant des personnes visent à la fois les hommes et les femmes.

TERMS AND CONDITIONS OF SERVICE

(Please Read Carefully)

All shipments to or from the Exhibitor will be handled by Levy Show Service Inc. "LEVY" and the RELEASEES on the following terms and conditions. No agent or employee of either party may alter or waive any of the following terms and conditions.

CHOOSING ROUTES AND AGENTS

LEVY and the RELEASEES shall have complete freedom in choosing the means, route and procedure to be followed in the handling, transportation and delivery of the goods. Advice by LEVY and the RELEASEES to an Exhibitor that a particular person or firm has been selected to render services as to the materials shall not be construed to mean that LEVY or the RELEASEES warrants or represents that such person or firm will render such services.

SERVICES RENDERED BY RELEASEES

LEVY is authorized to select RELEASEES as may be required to transport, store, deal with and deliver the goods, all of whom shall be considered agents of the Exhibitor. The goods may be entrusted to such parties subject to all conditions of this transportation document, and to all rules, regulations, requirements and conditions (including limitations of liability for loss, damage, expense or delay), whether printed, written or stamped, appearing in bills of lading, receipts or tariffs issued by such RELEASEES and others. LEVY undertakes only to use reasonable care in the selection of RELEASEES and others to whom it may entrust the goods for transportation, cartage, handling, delivery and/or storage or otherwise.

INDEMNIFICATION FOR SERVICES RENDERED BY RELEASEES

The Exhibitor agrees to indemnify and hold harmless the RELEASEES against any claim or legal action taken against the RELEASEES, including but not limited to: fines, penalties, liquidated damages and/or other money due arising from a shipment of materials of the Exhibitor assessed by any carrier, country, governmental agency or other person against the shipment because of the failure, or alleged failure, of the Exhibitor to comply with any laws, rulings, requirements of any country or governmental agency including but not limited to, increased duty, liquidated damage, penalty, fine or expense, together with reasonable expenses, including attorneys fees in connection with defending the claim or action and obtaining reimbursement from the Exhibitor, resulting from any act, inaccuracy or omission or any failure to make timely presentation even if not due to any negligence or fault of the Exhibitor. The confiscation or detention of any Exhibitor's materials by any country or governmental authority shall not affect or diminish the liability of Exhibitor to LEVY and the RELEASEES to pay all charges or other money due promptly on demand.

SHIPMENTS SUBJECT TO REWEIGH/REMEASUREMENT

Exhibitor shall provide weight and measurements for its shipments to LEVY or the RELEASEES as the case may be. Shipments are subject to reweighing and remeasurement by LEVY or the RELEASEES at their discretion. If dimensional weights apply under tariff rules, dimensions shall be shown as follows, Length x Width x Depth = Cubic Inches (or applicable unit measurement.) If the weight or measurements of the Exhibitor's materials as delivered are different from Exhibitors representations, or if pick-up or delivery time or location is changed by Exhibitor, LEVY and its RELEASEES reserve the right to refuse pick up or delivery or vary rates, charges and fees of shipment.

EXHIBITOR'S DUTY TO FURNISH AND WARRANT THE ACCURACY OF CUSTOMS INFORMATION

On an import or an export, at a reasonable time prior to the shipment or arrival of any Exhibitor materials to Customs, the Exhibitor shall furnish to LEVY in the proper language, form, and number, all invoices and documentation that may be useful and/or required by the laws and regulations of the countries of destination and entry. The Exhibitor shall be bound by and warrant the accuracy of all invoices, documents and information furnished to LEVY by the Exhibitor or its agents for export, import or other purposes. It is the Exhibitor's responsibility to know and comply with all classification, valuation, marketing and other Customs requirements, laws, regulations and rulings, enforced by any country or governmental agencies having jurisdiction over a shipment. Where a bond is required by a country or governmental agency to be given for the production of any document or the performance of any act, the Exhibitor shall be deemed bound by the terms of the bond notwithstanding the fact that the bond has been executed by LEVY and/or the RELEASEES as principal, it being understood that LEVY and the RELEASEES entered into such undertaking at the request and on behalf of the Exhibitor, and the Exhibitor shall indemnify and hold LEVY and the RELEASEES harmless for the consequences of any breach of the terms of the bond.

SERVICES RENDERED BY LEVY

When LEVY carries, stores or otherwise physically handles the Exhibitor's materials, including in the performance of any local pick up or delivery service, and loss, damage, destruction, disappearance, and/or theft occurs during such activity, LEVY assumes no liability, unless at the time of the loss, damage, destruction, disappearance and/or theft of the Exhibitor's materials, LEVY had actual custody or control of the Exhibitor's materials and the damages alleged to have been suffered are proven to be caused by the gross negligence or wilful misconduct of LEVY, its officers or employees, in which event the limitation of liability set forth in paragraph 7 shall apply. It is specifically declared that LEVY shall not be responsible for loss damage, destruction, disappearance, and/or theft of the Exhibitor's materials after the materials have been delivered to the Exhibitor's booth, nor shall LEVY be responsible for loss, damage, destruction disappearance and/or theft before the materials are picked up from the Exhibitor's booth for reloading after the show. The condition, count and content of the materials found at the time of local pick up or delivery or in the booth at the time of the actual removal as determined by LEVY or the RELEASEES shall be final and binding and the right is reserved by LEVY and the RELEASEES to alter the Exhibitor's transportation documents to reflect the actual condition, count and contents of the Exhibitor's materials.

LIMITATION OF LIABILITY FOR SERVICES RENDERED BY LEVY

LEVY and the RELEASEES do not know of the quality, condition, contents and value of the goods stored except as declared and described on the face of this transportation document by the Exhibitor. LEVY does **NOT** insure goods described on this transportation document. Without limiting the generality of the foregoing it is specifically declared that: all goods are handled at the Exhibitor's risk of loss, damage or delay in delivery caused by or through the inaccuracies, obligations or absence of marks numbers, address or description, act of God, acts of terrorism, irresistible force, enemies of the Queen, civil or military authorities, insurrection, riot, strikes, picketing or any other labour trouble, water, stream, fire, frost, vermin, heating or corruption, deterioration, drainage, dampness, rust, decay, collapse of the building, inevitable accident, depreciation or perishing by elapse of time, changes in temperature, contact with odours from other goods, inherent defects, lack of any special care or precaution, injury to articles insufficiently protected or arising from the nature of the goods, loss in weight, insufficient cooperation, boxing, crating or packing ordinary wear and tear in handling, leakage, concealed damage or any cause beyond the control of LEVY or failure to detect any of the foregoing. All storage, handling fees and other applicable charges and costs must be paid by the Exhibitor on goods stored and lost or damaged as a result of the above causes. In connection with all shipments, the Exhibitor agrees that the legal liability of LEVY, shall be strictly limited to the lessor of **\$50.00 CDN per item lost, stolen, damaged or destroyed** or **\$500.00 CDN per shipment** whichever is less, unless the Exhibitor specifically requests a higher limit in writing and declares an excess in value, in which case LEVY may at its option, accept liability and assess an additional charge to costs of storage, handling charge or other applicable rate. LEVY shall not, in any event or under any circumstances, be liable for any claim of any type whatsoever with respect to the Exhibitor's materials unless the claim is presented in writing within a reasonable time, not exceeding **30 days** after the Exhibitor learns of, or, in the exercise of reasonable care, should have learned of the loss, damage or destruction of the Exhibitor's materials. It is specifically declared and the Exhibitor agrees that LEVY shall not

TERMS AND CONDITIONS OF SERVICE Con'td

be liable to any extent whatsoever for any actual, potential or assumed loss of business, loss of profit, loss of revenues or for any collateral costs which may result from any loss, damage, destruction, disappearance, theft and or delay in delivery to an Exhibitor's materials which may make it impossible or impractical to exhibit.

GENERAL LIEN ON ANY EXHIBITOR'S PROPERTY

LEVY shall have a general lien on any and all property, materials, and documents relating thereto, of the Exhibitor, in its possession, custody or control or en route, for all claims, for charges, expenses or advances incurred by LEVY in connection with any shipment of the Exhibitor and if such claim remains unsatisfied for thirty days (30) after demand for its payment is made, LEVY may sell at public auction or private sale, upon ten days written notice, sent by certified or registered mail with return receipt requested from Exhibitor, all the goods, wares and/or merchandise, or so much thereof as may be necessary to satisfy such lien, and apply the net proceeds of such sale to the payment of the amount due to LEVY. Any surplus from such sale shall be transmitted to the Exhibitor, and the Exhibitor shall be liable for any deficiency in that sale.

CONSTRUCTION OF TERMS AND VENUE

This agreement and any rights, duties and obligations as between the parties to this Agreement shall be governed by and interpreted solely in accordance with the law of the Province of British Columbia and no other jurisdiction. Any litigation involving the parties to this Agreement shall be brought solely within the Province of British Columbia and shall be within the exclusive jurisdiction of the Courts of the Province of British Columbia.

WARSAW CONVENTION

International air carriage is subject to the rules relating to liability established by the Convention for the Unification of Certain Rules relating to International carriage by Air signed at Warsaw October 12, 1929.

LANGUAGE

The parties confirm their express desire that this Agreement be drafted in the English language. Les parties par les présentes confirment leur volonté expresse que la présente convention soit rédigée en langue anglaise.

Cargo Insurance Coverage Information – Subject to the terms and conditions of Cargo Policy #819218

Transportation Floater Form – All Risks

Subject to: Replacement Cost, 100% Co-insurance, Locked Vehicle Warranty, Canadian Funds; Used or Damaged Goods subject to: Domestic Transportation Floater – "Named Perils" and settlement is subject to Actual Cash Value

Geographical Limits: Ports and/or places in Canada, USA, Europe and Asia. Excluding: Afghanistan, Angola, Cuba, Ethiopia, former Yugoslavia, former Soviet Union, Iran, Iraq, Lebanon, Nicaragua, Nigeria, Somalia, Uganda and any other country where their local legislation decrees insurance must be effected locally, unless otherwise shown on the declaration page of this policy or specially declared and accepted by the Insurers Underwriter prior to shipment.

Excluding: Jewellery, precious metals, bank notes, securities, works of art, valuable papers, dangerous goods, antiques, glass, fresh and frozen foods, tobacco, tobacco products, alcohol or alcoholic beverages, confectionery, asbestos tiles, furs, live animals, bulk commodities, perishable goods, microprocessor chips, cellular phones, computer parts and other similar items unless otherwise shown on the declaration page of this policy or specially declared and accepted by the Insurers Underwriter prior to shipment.

IMPORTANT NOTICE: As part of our underwriting procedure, a routine inquiry may be made to obtain applicable information concerning various risk characteristics. Upon written request, additional information as to the nature and scope of the report, if one is made, will be provided. It is agreed that the information contained herein shall be the basis of the contract. The above information is intended to be descriptive only all terms and conditions are subject to the actual policy wording (available on request).

CLAIMS AGAINST CARRIERS: It is strongly recommended that, when you receive cargo from the carrier in a damaged condition, NOTICE OF CLAIM be filed with the carrier in writing at the time of accepting the goods, or if the damage is not apparent, then within three days. This notice of claim may be (a) in the form of endorsement on the delivery receipts or (b) by letter. The notice in writing need not be given if joint survey is held AT TIME OF DELIVERY (i/e/ surveyor for carrier and consignee being present.) When the actual loss or damage is later determined from an examination of the Filing claims against the carrier:

- 1) DOES NOT affect the claim on your policy;
- 2) WILL protect any rights you have under the Bill of Lading
- 3) CAN reduce your premium, since good recoveries make for better claims experience



POST EVENT INFORMATION

Post Event Shipping with Levy Logistics

We offer outbound shipping, customs clearance, as well as local cartage services.

- Pre-arranged: Kindly complete the Logistics Information and Order Form provided in the exhibitor kit. Please start at section “Destination Information AFTER SHOW” and submit the completed form to acheng@levyshow.com.
- On Show Site: Please visit the Levy Customer Service Desk and complete a Material Handling Agreement (MHA). We will require delivery information to ensure your freight reaches its final destination.

Post Event Short Term Storage (long term storage available upon request)

Short term storage is available for all exhibitors. Our logistics team will arrange local cartage services from the event venue direct to our warehouse, at the exhibitor's expense.

- Pre-arranged: Please send an email to our Levy Logistics Department at acheng@levyshow.com requesting post event storage services.
- On Show Site: Please visit the Levy Customer Service Desk and complete a MHA.
- Post Event Storage Information:
 - Please allow a minimum of one business day for availability of freight at the Levy Warehouse
 - Levy will send an email to the contact person on file with release details (i.e. pick up date and time, warehouse address, etc.)
 - We will require your carrier information to arrange a proper warehouse release
 - The exhibitor is responsible for providing the carrier bill of lading or courier labels(s) prior to the release of shipment from our storage facility
 - The exhibitor is responsible for making all transportation arrangements once the shipment is released from the Levy Warehouse

Rescued Freight

All exhibitors must move out of **ANIREVO 2024** as per the move-out schedule. Any materials left at the venue past the scheduled time will be considered **RESCUED** by Levy Logistics and forwarded to the Levy warehouse at the exhibitor's expense.

Charges

Material handling and shipping charges will be invoiced to the exhibitor directly. A completed Credit Card Authorization Form is required in order to process your post show shipping and storage requests.

Further Information

For more information please feel free to contact our Levy Logistics team at 604 277 1726 or by email at acheng@levyshow.com.

CARPET and DRAPE

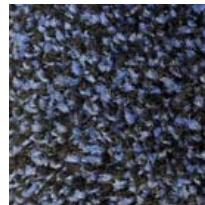
STANDARD Carpet Colour Options



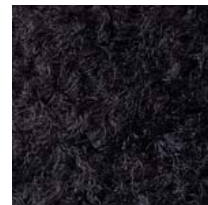
Blue



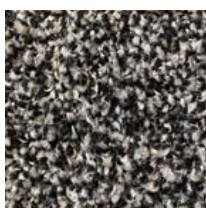
Red



Bluejay



Black



Tuxedo



Granite / Grey

DELUXE CUSTOM 28oz. Carpet Colour Options (upon availability)



Navy



Black



Charcoal

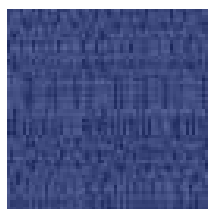


Silver Cloud



White

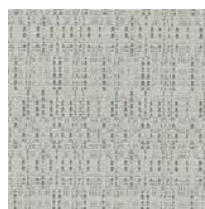
DRAPE Colour Options



Blue



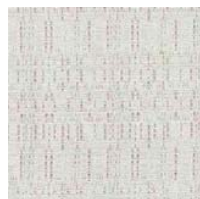
Red



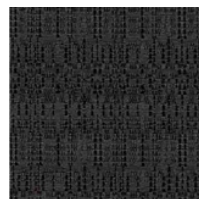
Silver



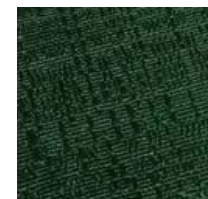
Burgundy



White



Black



Green

DISCLAIMER Actual products and colors available may vary from the images shown. All products subject to availability

Do you have questions?

We would be pleased to help. Contact us at: 604 277 1726 operations@levyshow.com www.levyshow.com

CARPET, PADDING & DRAPE RENTAL ORDER FORM & INVOICE

CARPET & PADDING PACKAGES

Description	Discount Rate	Standard Rate	Total
Size - 10 ft. X 10 ft. + Pad	530.60	568.10	
10 ft. X 20 ft. + Pad	1,061.20	1,379.56	
20 ft. X 20 ft. + Pad	2,140.00	2,782.00	
<input type="checkbox"/> Blue <input type="checkbox"/> Red <input type="checkbox"/> Bluejay <input type="checkbox"/> Black <input type="checkbox"/> Tuxedo <input type="checkbox"/> Granite / Grey			

PADDING & POLY OPTIONS

Description	Discount Rate	Standard Rate	Total
Carpet foam padding per sq. ft.			
Size _____ ft. x _____ ft.			
= _____ sq. ft.	2.25	2.90	
Poly covering per sq. ft.			
Size _____ ft. x _____ ft.			
= _____ sq. ft.	1.25	1.63	

COLOURED CARPET SELECTIONS

Description	Discount Rate	Standard Rate	Total
Size - 10 ft. X 10 ft.	305.60	397.30	
10 ft. X 20 ft.	611.20	794.60	
Other sizes in 10' x 10' increments only. Calculate sq. ft. X price per sq. ft.			
Size _____ ft. x _____ ft.			
= _____ sq. ft.	3.10	4.00	
Custom cut size. Calculate sq. ft. x price per sq. ft.			
Size _____ ft. x _____ ft.			
= _____ sq. ft.	4.00	5.20	
<input type="checkbox"/> Blue <input type="checkbox"/> Red <input type="checkbox"/> Bluejay <input type="checkbox"/> Black <input type="checkbox"/> Tuxedo <input type="checkbox"/> Granite / Grey			

A surcharge may be applied for damages incurred after installation.

DRAPE

_____ lin. ft. of 3' high drape	\$11.20/ft	\$14.60/ft	
_____ lin. ft. of 8' high drape	\$15.40/ft	\$20.00/ft	
<input type="checkbox"/> Blue <input type="checkbox"/> Red <input type="checkbox"/> Burgundy <input type="checkbox"/> Silver <input type="checkbox"/> White <input type="checkbox"/> Black <input type="checkbox"/> Hunter Green			

PLEASE NOTE: THE DRAPE PROVIDED WITH YOUR BOOTH SPACE CANNOT BE CHANGED WITHOUT SHOW MANAGEMENT APPROVAL.

SPECIAL INSTRUCTIONS

****PRICES INCLUDE INSTALLATION & REMOVAL****

EXHIBITOR INFORMATION

COMPANY _____

CONTACT _____

BOOTH# _____

COST SUMMARY

RATE ADJUSTMENT (OFFICE USE ONLY)		
25% CANCELLATION FEE (OFFICE USE ONLY)		
SUBTOTAL		
P.S.T. 7%		
G.S.T. 5%		
TOTAL GST#R103315057		

PLEASE REFER TO THE PAYMENT & CREDIT CARD CHARGE AUTHORIZATION FORM

****ORDERS WILL NOT BE PROCESSED WITHOUT PAYMENT****

STANDARD RATE will be applied to all orders not received and paid in full by **July 18, 2024**. We reserve the right to adjust orders calculated incorrectly.

A 25% CANCELLATION FEE will be applied to all orders received and then cancelled 3 weeks prior to install. If full service has been provided then 100% of original fee will be applied.

CARPET-PADDING-DRAPE 2024 10 x 10.cdr

TABLES & CHAIRS

Tables

All tables are available in the below options:

- Unskirted or Skirted
- 30" or 40" height



4' x 2' skirted table



6' x 2' skirted table

Skirt Colour Options



Blue



Red



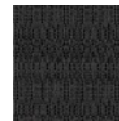
Burgundy



Silver



White



Black



Hunter
Green

Pedestal Tables

All pedestal tables are available in the below options:

- 30" diameter tops
- 17" / 30" / 40" high
- White or Black finished tops



Chairs



Fabric Sled Base Chair



Fabric Arm Chair



Folding Chair



Fabric Steno Chair



Padded Bar Stool



Fabric Highback Stool

**DISCLAIMER* Actual products and colors available may vary from the images shown. All products subject to availability*

Do you have questions?


We would be pleased to help. Contact us at: 604 277 1726


operations@levyshow.com

www.levyshow.com



TABLE AND SEATING RENTAL ORDER FORM & INVOICE

TABLES

Description	Qty.	Discount Rate	Standard Rate	Total
 TABLES 30" HEIGHT				
4' x 2' Skirted		125.00	162.50	
6' x 2' Skirted		145.00	188.50	
Fourth side of table skirted <i>**available as an addition to orders for 6' skirted tables only**</i>		55.00	71.50	
Unskirted table <input type="checkbox"/> 6' <input type="checkbox"/> 4'		95.00	123.50	
<input type="checkbox"/> Blue <input type="checkbox"/> Red <input type="checkbox"/> Burgundy <input type="checkbox"/> Silver <input type="checkbox"/> White <input type="checkbox"/> Black <input type="checkbox"/> Hunter Green				

 TABLES 40" COUNTER HEIGHT				
4' x 2' Skirted		190.00	247.00	
6' x 2' Skirted		210.00	273.00	
Fourth side of table skirted <i>**available as an addition to orders for 6' skirted tables only**</i>		60.00	78.00	
Unskirted table <input type="checkbox"/> 6' <input type="checkbox"/> 4'		115.00	149.50	
<input type="checkbox"/> Blue <input type="checkbox"/> Red <input type="checkbox"/> Silver <input type="checkbox"/> White <input type="checkbox"/> Black <input type="checkbox"/> Hunter Green				

ROUND PEDESTAL TABLES

Description	Qty.	Discount Rate	Standard Rate	Total
 17" H x 30"D Coffee Table				
White		120.00	156.00	
Black		120.00	156.00	
 27" H x 30"D Round Ped Table				
White		140.00	182.00	
Black		140.00	182.00	
 40" H x 30"D Round Ped Table				
White		150.00	195.00	
Black		150.00	195.00	
ROUND STRETCH SPANDEX COVER 30"H <input type="checkbox"/> Black		40.00	52.00	
40"H <input type="checkbox"/> Black <input type="checkbox"/> White <input type="checkbox"/> Royal Blue <input type="checkbox"/> Red <input type="checkbox"/> Teal <input type="checkbox"/> Yellow		40.00	52.00	







EXHIBITOR INFORMATION

COMPANY

CONTACT

BOOTH#

CHAIRS

Description	Qty.	Discount Rate	Standard Rate	Total
 FABRIC SLED BASE CHAIR - GREY		84.00	109.00	
 FABRIC ARMCHAIR - GREY		106.00	138.00	
 FOLDING CHAIR		46.00	60.00	
 FABRIC STENO CHAIR		121.00	157.00	
 PADDED BAR STOOL - BLACK		105.00	136.50	
 PADDED HIGH BACK STOOL		150.00	195.00	

COST SUMMARY

RATE ADJUSTMENT	(OFFICE USE ONLY)	
25% CANCELLATION FEE	(OFFICE USE ONLY)	
SUBTOTAL		
P.S.T. 7%		
G.S.T. 5%		
TOTAL GST#R103315057		

PLEASE REFER TO THE PAYMENT & CREDIT CARD CHARGE AUTHORIZATION FORM








****ORDERS WILL NOT BE PROCESSED WITHOUT PAYMENT****

STANDARD RATE will be applied to all orders not received and paid in full by **July 18, 2024**. We reserve the right to adjust orders calculated incorrectly.




A 25% CANCELLATION FEE will be applied to all orders received and then cancelled 3 weeks prior to install. If full service has been provided then 100% of original fee will be applied.
 TABLE-CHAIR 2024.cdr

ACCESSORIES RENTAL ORDER FORM & INVOICE

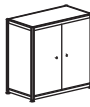


ACCESSORIES

Description	Qty.	Discount Rate	Standard Rate	Total
 ALUMINUM FOLDING LITERATURE RACK (with clear plexi dividers) - double wide rack available please ask for rate		143.00	186.00	
 <input type="checkbox"/> COAT TREE <input type="checkbox"/> CHROME BAG HOLDER		95.00	123.50	
 GARMENT ROLLING RACK		104.00	135.00	
 WASTE BASKET		36.50	47.45	
 RETRACTABLE STANCHION (max belt length 6ft) <input type="checkbox"/> Black <input type="checkbox"/> Blue <input type="checkbox"/> Red		76.50 (each)	99.50 (each)	
 ALUMINUM EASEL Fits sign sizes: 22" x 28" 24" x 36" 28" x 44"		104.00	135.00	
 40''H CHARGING STATION (based on available inventory) **custom graphics available at an additional cost**		1,062.00	1,380.00	
MINI FRIDGE		263.00	342.00	
LARGE GLASS BOWL		61.00	79.00	

DISPLAY EQUIPMENT

Description	Qty.	Discount Rate	Standard Rate	Total
 CHROME SIGN HOLDER 22" x 28"		111.50	145.00	
 FABRIC POSTER BOARD 4' x 8' grey fabric covered both sides <input type="checkbox"/> Horizontal (shown) <input type="checkbox"/> Vertical		286.00	372.00	
 TALL CABINET SHOW CASE 3 shelves with lockable door 12" X 39" X 77" <input type="checkbox"/> Lights \$78.00		780.50	1,014.70	

COUNTER OPTIONS

Description	Qty.	Discount Rate	Standard Rate	Total
 COUNTER Sliding doors & storage shelf 20" x 40" x 40" tall <input type="checkbox"/> Lock (\$21.00 each) <input type="checkbox"/> Graphic panel upgrade (\$345.00)		White 400.00	White 520.00	
 JEWELRY CASE One shelf 20" x 40" x 40" tall <input type="checkbox"/> Lock (\$21.00 each) <input type="checkbox"/> Lights (\$21.00 each)		Black 495.00	Black 643.50	
 SHOW CASE Two shelves 20" x 40" x 40" tall <input type="checkbox"/> Lock (\$21.00 each) <input type="checkbox"/> Lights (\$21.00 each)		495.00	643.50	
		525.00	682.50	

COST SUMMARY

RATE ADJUSTMENT	(OFFICE USE ONLY)	
25% CANCELLATION FEE	(OFFICE USE ONLY)	
SUBTOTAL		
P.S.T. 7%		
G.S.T. 5%		
TOTAL	GST#R103315057	

EXHIBITOR INFORMATION

COMPANY

CONTACT

BOOTH#

PLEASE REFER TO THE PAYMENT & CREDIT CARD CHARGE AUTHORIZATION FORM

****ORDERS WILL NOT BE PROCESSED WITHOUT PAYMENT****

STANDARD RATE will be applied to all orders not received and paid in full by **July 18, 2024**. We reserve the right to adjust orders calculated incorrectly.

A 25% CANCELLATION FEE will be applied to all orders received and then cancelled 3 weeks prior to install. If full service has been provided then 100% of original fee will be applied.

ACCESSORIES 2024.cdr

Cardero Cube Ottoman

Vinyl cube ottoman
19.7L x 19.7W x 17.0H



Cardero Rectangle Ottoman

Vinyl rectangle ottoman
39.4L x 19.7W x 17.0H



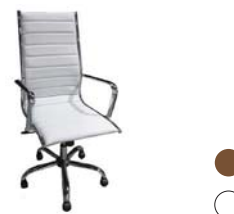
Cube Ottoman

Vinyl tufted cube ottoman
17.5L x 17.5W x 17.0H



Clark Office Chair

Vinyl office chair with chrome base.
Adjustable height with wheels.
19.5L x 23.0W x 44.0H



Madrid Bench

Bench ottoman with chrome
and plastic base and tufted faux
leather cushions
76.0L x 32.0W x 18.5H



Madrid Chair

Lounge chair with chrome and
plastic base and tufted faux
leather cushions
33.0L x 30.5W x 29.0H



Globus Chair

Swivel pod chair with chrome base
in white high bicast leather
30.0L x 28.0W x 29.0H



Colburn Barstool

Barstool with adjustable base in
chrome and padded vinyl seat and back
15.0L x 17.0W x 0.0H



Main Barstool

Barstool with formed plastic seat and
chrome or black base
21L x 20.5W x 44.5H



Elliot Tub Chair White

Molded PP chair in white with wood
dowel legs
19.50L x 19.50W x 33.50H



Carrall Chair

Highback lounge chair with alumi-
num alloy swivel X-base in wool
36.0L x 36.0W x 42.0H



Avenue 6' Bar

Bar with stainless steel frame and
plexiglass front, sides and top.
Mid storage shelf is included.
Branding opportunity
72.0L x 30.0W x 40.0H



Strathcona Bar

Bar counter with gunmetal pipe frame
covered in Acacia wood panels
55.0L x 20.5W x 41.3H



Small Pillows

Approx. size 16"x16"



Large Pillows

Approx. size 20"x 20"



Area Rugs

Approx. size 7' x 10'



PRESTIGE FURNITURE PACKAGE RENTAL ORDER FORM & INVOICE

SUBJECT TO AVAILABILITY

ANIREVO 2024
August 8 - 11, 2024
Vancouver Convention Centre - West
Vancouver, BC

Description	QTY	Discount Rate	Standard Rate	TOTAL
Cardero Cube Ottoman 19.7L x 19.7W x 17.0H 		162.10	210.70	
Cardero Rectangle Ottoman 39.4L x 19.7W x 17.0H 		291.60	379.10	
Cube Ottoman 17.5L x 17.5W x 17.0H 		139.20	181.00	
Clark Office Chair 19.5L x 23.0W x 44.0H 		332.70	432.50	
Madrid Bench 76.0L x 32.0W x 18.5H 		1,033.00	1,342.90	
Madrid Chair 33.0L x 30.5W x 29.0H 		359.30	467.10	
Globus Chair 30.0L x 28.0W x 29.0H 		554.50	720.90	
Colburn Barstool 15.0L x 17.0W x 0.0H 		271.20	352.60	
Main Barstool 21L x 20.5W x 44.5H 		120.90	157.20	
Elliot Tub Chair White 19.50L x 19.50W x 33.50H 		99.30	129.10	
Carrall Chair 36.0L x 36.0W x 42.0H 		788.20	1,024.70	
Avenue 6' Bar 72.0L x 30.0W x 40.0H 		1,267.10	1,647.20	
Strathcona Bar 55.0L x 20.5W x 41.3H 		1,162.20	1,510.90	

Decorative Pillows	QTY	Discount Rate	Standard Rate	TOTAL
Small Pillows Approx size 16" x 16" 			call for quote	
Large Pillows Approx. size 20" x 20" 			call for quote	
Area Rugs Approx. size 7' x 10' 			call for quote	

COST SUMMARY

Rate Adjustment (office use only)	
25% Cancellation Fee (office use only)	
SUBTOTAL	
Transportation & Labour Fee 25% (per order)	
P.S.T. 7%	
G.S.T 5%	
TOTAL	

****additional fees will apply for orders over \$2,500.00****

EXHIBITOR INFORMATION

Company	
Contact	Booth#

**PLEASE REFER TO THE PAYMENT & CREDIT CARD
CHARGE AUTHORIZATION FORM**

****ORDERS WILL NOT BE PROCESSED WITHOUT PAYMENT****

****A 30% SURCHARGE WILL APPLY TO THE
STANDARD RATE FOR ANY ORDERS
PLACED LESS THAN 5 DAYS IN ADVANCE****

STANDARD RATES

Will be applied to all orders not received and paid in full by **July 18, 2024**.
We reserve the right to adjust orders calculated incorrectly

A 25% CANCELLATION FEE

Will be applied to all orders received and then cancelled. If full service has been
provided then 100% of original fee will be applied. GST#R103315057

Sydney End Table

End table with stainless steel base and laminate top
26.0L x 26.0W x 18.0H



Sydney Coffee Table

Coffee table with stainless steel base and laminate top
48.0L x 26.0W x 18.0H



L22 Plank End Table

End table with powder coated base and enamel wood top
18.0L x 18.0W x 17.5H



L22 Plank Coffee Table

Coffee table with powder coated base and enamel wood top
48.0L x 22.0W x 18.0H



Wall Street Coffee Table

White enamel coffee table with chrome base
44.0L x 22.0W x 15.0H



Wall Street End Table

White enamel end table with chrome base
22.0L x 15.8W x 18.5H



Elliot Cafe Table

Laminate tabletop with wood dowel legs
27.00L x 27.00W x 29.00H



Girari Bar Table

Pedestal Bar table with brushed welded aluminum curved base and tempered glass top



L22 High Straight Bar Table

Console table with metal frame and white acrylic top with internal lighting



L22 Communal Table

Dining table with metal frame and white acrylic top. Recessed centre trough and internal lighting



8' Harvest Dining Table

Reclaimed wood top dining table with steel legs
96.0L x 35.0W x 30.0H



8' Harvest Dining Table W/ Charging Unit

Reclaimed wood top dining table with steel legs
96.0L x 35.0W x 30.0H






PRESTIGE FURNITURE PACKAGE RENTAL ORDER FORM & INVOICE

SUBJECT TO AVAILABILITY

ANIREVO 2024
August 8 - 11, 2024
Vancouver Convention Centre - West
Vancouver, BC

Description	QTY	Discount Rate	Standard Rate	TOTAL
Sydney End Table 26.0L x 26.0W x 18.0H  <input type="checkbox"/> <input checked="" type="checkbox"/> <input type="checkbox"/>		193.80	251.90	
Sydney Coffee Table 48.0L x 26.0W x 18.0H  <input type="checkbox"/> <input checked="" type="checkbox"/> <input type="checkbox"/>		258.40	335.90	
Plank End Table 18.0L x 18.0W x 17.5H  <input type="checkbox"/> <input checked="" type="checkbox"/> <input type="checkbox"/>		167.10	217.20	
L22 Plank Coffee Table 48.0L x 22.0W x 18.0H  <input type="checkbox"/> <input checked="" type="checkbox"/> <input type="checkbox"/> <input checked="" type="checkbox"/>		332.70	432.50	
Wall Street End Table 22.0L x 15.8W x 18.5H  		193.80	251.90	
Wall Street Coffee Table 44.0L x 22.0W x 15.0H  		387.50	503.80	
Elliot Cafe Table 27.00L x 27.00W x 29.00H  <input type="checkbox"/> <input checked="" type="checkbox"/> <input type="checkbox"/>		225.00	292.50	
Girari Bar Table 30.0L x 30.0W x 30.0H  		255.80	332.50	
L22 High Straight Bar Table 72.0L x 18.0W x 40.0H  		536.50	697.50	

Description	QTY	Discount Rate	Standard Rate	TOTAL
L22 Communal Table 95.0L x 38.0W x 30.0H 		874.00	1,136.20	
8' Harvest Dining Table 96.0L x 35.0W x 30.0H 		829.30	1,078.10	
8' Harvest Dining Table W/ Charging Unit 96.0L x 35.0W x 30.0H 		955.20	1,241.80	

COST SUMMARY

Rate Adjustment (office use only)	
25% Cancellation Fee (office use only)	
SUBTOTAL	
Transportation & Labour Fee 25% (per order)	
P.S.T. 7%	
G.S.T 5%	
TOTAL	

additional fees will apply for orders over \$2,500.00

EXHIBITOR INFORMATION

Company	
Contact	Booth#

**PLEASE REFER TO THE PAYMENT & CREDIT CARD
CHARGE AUTHORIZATION FORM**

****ORDERS WILL NOT BE PROCESSED WITHOUT PAYMENT ****

****A 30% SURCHARGE WILL APPLY TO THE
STANDARD RATE FOR ANY ORDERS
PLACED LESS THAN 5 DAYS IN ADVANCE****

STANDARD RATES

Will be applied to all orders not received and paid in full by **July 18, 2024**.
We reserve the right to adjust orders calculated incorrectly

A 25% CANCELLATION FEE

Will be applied to all orders received and then cancelled. If full service has been provided then 100% of original fee will be applied. GST#R103315057

Georgia Chair

Contemporary chair with silver brushed powder coated legs in vinyl.
37.0L x 31.0W x 33.0H



Georgia Sofa Powered

Contemporary sofa with silver brushed powder coated legs in vinyl.
78.0L x 31.0W x 33.0H



Georgia Sofa

Contemporary sofa with silver brushed powder coated legs in vinyl.
78.0L x 31.0W x 33.0H



Fleming Arm Chair

Mid-century arm chair with walnut legs in saddle brown tufted leather.
35.0L x 35.0W x 30.0H



Fleming Sofa

Mid-century sofa with walnut legs in saddle brown tufted leather.
84.0L x 35.0W x 30.0H



Nova+ Side Chair

Armless chair with chrome base in vinyl.
27.5L x 33.0W x 35.0H



Nova+ Love Seat

Armless love seat with chrome base in vinyl.
55.0L x 33.0W x 35.0H



Nova+ Sofa

Armless sofa with chrome base in vinyl.
82.0L x 33.0W x 35.0H



Modular Seating

The following items work on their own or can be set up in a variety of other seating arrangements to suit your event.

Wall Street Corner Chair

Sectional corner chair with chrome base in white vinyl.
27.0L x 28.0W x 31.0H



Wall Street Left Arm Chair

Sectional left arm chair with chrome base in white vinyl.
27.0L x 28.0W x 31.0H



Wall Street Right Arm Chair

Sectional right arm chair with chrome base in white vinyl.
27.0L x 28.0W x 31.0H



Wall Street Arm Chair

Arm chair with chrome base in white vinyl with buttons.
27.0L x 28.0W x 31.0H



Wall Street Armless Chair









Armless chair with chrome base in white vinyl with buttons.
23.0L x 28.0W x 31.0H



PRESTIGE FURNITURE PACKAGE RENTAL ORDER FORM & INVOICE

SUBJECT TO AVAILABILITY






ANIREVO 2024
August 8 - 11, 2024
Vancouver Convention Centre - West
Vancouver, BC

Description	QTY	Discount Rate	Standard Rate	TOTAL
Georgia Chair 37.0L x 31.0W x 33.0H 		1,099.40	1,429.20	
Georgia Sofa Powered 78.0L x 31.0W x 33.0H 		1,937.00	2,518.10	
Georgia Sofa 78.0L x 31.0W x 33.0H 		1,614.00	2,098.20	
Fleming Arm Chair 35.0L x 35.0W x 30.0H 		1,142.30	1,485.00	
Fleming Sofa 84.0L x 35.0W x 30.0H 		1,771.40	2,302.80	
Nova+ Side Chair 27.5L x 33.0W x 35.0H <input type="radio"/> <input type="checkbox"/> <input checked="" type="checkbox"/> 		495.00	643.50	
Nova+ Love Seat 55L x 33.0W x 35.0H <input type="radio"/> <input type="checkbox"/> <input checked="" type="checkbox"/> 		995.00	1,293.50	
Nova+ Sofa 82L x 33.0W x 35.0H <input type="radio"/> <input type="checkbox"/> <input checked="" type="checkbox"/> 		1,495.00	1,943.50	

**PLEASE REFER TO THE PAYMENT & CREDIT CARD
CHARGE AUTHORIZATION FORM**

**** ORDERS WILL NOT BE PROCESSED WITHOUT PAYMENT ****

****A 30% SURCHARGE WILL APPLY TO THE
STANDARD RATE FOR ANY ORDERS
PLACED LESS THAN 5 DAYS IN ADVANCE****

Description	QTY	Discount Rate	Standard Rate	TOTAL
Modular Seating				
Wall Street Left Arm Chair 27.0L x 28.0W x 31.0H <input type="radio"/> <input type="checkbox"/> <input checked="" type="checkbox"/> 		645.70	839.40	
Wall Street Corner Chair 27.0L x 28.0W x 31.0H <input type="radio"/> <input type="checkbox"/> <input checked="" type="checkbox"/> 		645.70	839.40	
Wall Street Right Arm Chair 27.0L x 28.0W x 31.0H <input type="radio"/> <input type="checkbox"/> <input checked="" type="checkbox"/> 		645.70	839.40	
Wall Street Armless Chair 23.0L x 28.0W x 31.0H <input type="radio"/> <input type="checkbox"/> <input checked="" type="checkbox"/> 		645.70	839.40	
Wall Street Arm Chair 27.0L x 28.0W x 31.0H <input type="radio"/> <input type="checkbox"/> <input checked="" type="checkbox"/> 		645.70	839.40	

COST SUMMARY

Rate Adjustment (office use only)

25% Cancellation Fee (office use only)

SUBTOTAL

Transportation & Labour Fee 25% (per order)

P.S.T. 7%

G.S.T 5%

TOTAL

****additional fees will apply for orders over \$2,500.00****

EXHIBITOR INFORMATION

Company

Contact

Booth#

STANDARD RATES

Will be applied to all orders not received and paid in full by **July 18, 2024**.
We reserve the right to adjust orders calculated incorrectly

A 25% CANCELLATION FEE

Will be applied to all orders received and then cancelled. If full service has been
provided then 100% of original fee will be applied. GST#R103315057

Package A



Includes:

1 x Girari Bar Table

Brushed aluminum 39" high bar table w/ glass top.

2 x Main Bar Stools

Formed plastic seat and chrome base.

Package B



Includes:

1 x Sydney End Table

Stainless steel base and laminate top.

2 x Wall Street Arm Chairs

Chrome base and white vinyl seat w/buttons.

Package C



Includes:

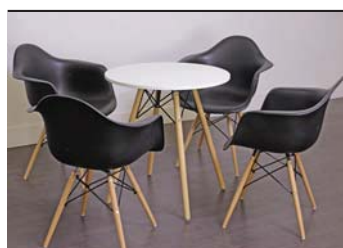
1 x Plank Coffee Table

Metal base with enamel painted top.

2 x Wall Street Loveseat

Chrome base and white vinyl seat w/buttons.

Package D



Includes:

1 x Elliot Café Table

Laminate tabletop w/wood dowel legs

4 x Elliot Arm Chairs

Molded PP chair w/wood dowel legs.

PRESTIGE FURNITURE PACKAGE RENTAL ORDER FORM & INVOICE

SUBJECT TO AVAILABILITY

ANIREVO 2024
August 8 - 11, 2024
Vancouver Convention Centre - West
Vancouver, BC

Description	QTY	Discount Rate	Standard Rate	TOTAL
-------------	-----	---------------	---------------	-------

Package A

				
		497.60	646.90	

Package C

				
		2,915.50	3,790.10	

Package D

				
		624.20	811.50	

Description	QTY	Discount Rate	Standard Rate	TOTAL
-------------	-----	---------------	---------------	-------

Package B

				
		1,485.20	1,930.70	

COST SUMMARY

Rate Adjustment (office use only)	
25% Cancellation Fee (office use only)	
SUBTOTAL	
Transportation & Labour Fee 25% (per order)	
P.S.T. 7%	
G.S.T 5%	
TOTAL	

additional fees will apply for orders over \$2,500.00

EXHIBITOR INFORMATION

Company	
Contact	Booth#

**PLEASE REFER TO THE PAYMENT & CREDIT CARD
CHARGE AUTHORIZATION FORM**

****ORDERS WILL NOT BE PROCESSED WITHOUT PAYMENT****

****A 30% SURCHARGE WILL APPLY TO THE
STANDARD RATE FOR ANY ORDERS
PLACED LESS THAN 5 DAYS IN ADVANCE****

STANDARD RATES

Will be applied to all orders not received and paid in full by **July 18, 2024**.
We reserve the right to adjust orders calculated incorrectly

A 25% CANCELLATION FEE

Will be applied to all orders received and then cancelled 3 weeks prior to install.
If full service has been provided then 100% of original fee will be applied.

CUSTOM EXHIBITS

A more sophisticated technique to exhibit marketing messages creatively and effectively!

With decades of service, Levy continues to provide viable and reliable alternatives to maximize clients' overall booth space. Our sales team and design specialists work closely with each and every client to create a unique exhibit designed to meet a wide variety of today's marketing strategies. Whether the image and budget are conservative or extravagant Levy exceeds to offer the most suitable and perfect space solutions.



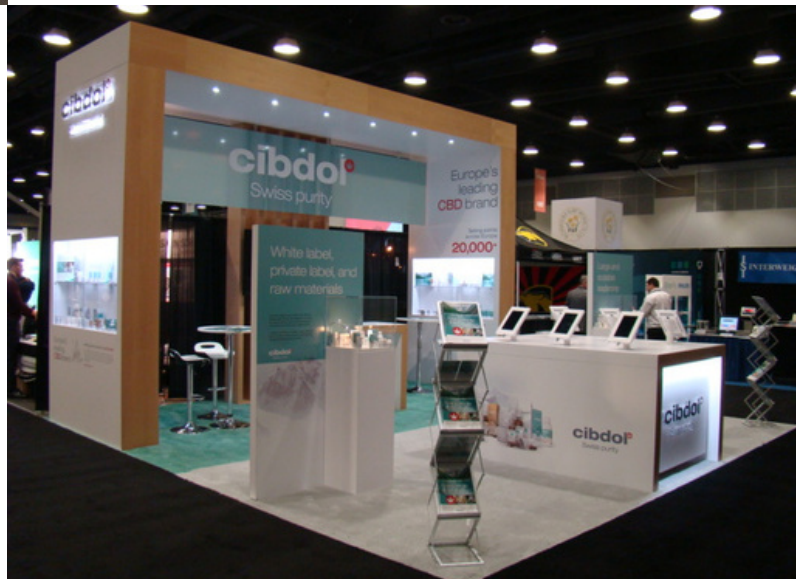
Collaboratively designed to meet your specific requirements, budget, and bring your vision to reality.

Each Levy Custom Designed Exhibit will be built to exact specifications and will be:

- Unique
- Attractive
- Versatile
- Impressive
- Memorable
- Functional
- Creative
- Inviting
- Efficient

Let us help you create a one of a kind booth space.

Call our experienced professionals for an innovative, customized, and no obligation approach.



HARDWALL SYSTEM RENTAL ORDER FORM & INVOICE

MODEL 110



****image is based on 10' x 10' booth size****

Model 110 includes:

- Aluminum structure
- White hardwall panels
- Straight header sign with company name in block lettering
- Carpet
- Installation and dismantle

Discount Rate:
\$2,298.80

Standard Rate:
\$2,988.40

☐ 8' x 10' ☐ 10' x 10'

MODEL 120



****image is based on 10' x 10' booth size****

Model 120 includes:

- Aluminum structure
- White hardwall panels
- Corner booth with curved counter
- Curved header sign
- Carpet
- Installation and dismantle

Discount Rate:
\$2,733.50

Standard Rate:
\$3,553.60

☐ 8' x 10' ☐ 10' x 10'

MODEL 210



****image is based on 10' x 20' booth size****

Model 210 includes:

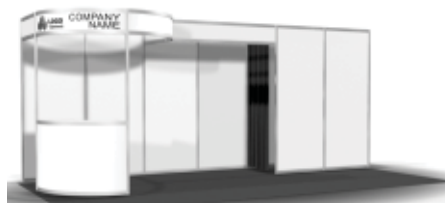
- Aluminum structure
- White hardwall panels
- Straight backwall with 1 curved header
- Carpet
- Installation and dismantle

Discount Rate:
\$3,395.20

Standard Rate:
\$4,413.80

☐ 8' x 20' ☐ 10' x 20'

MODEL 220



****image is based on 10' x 20' booth size****

Model 220 includes:

- Aluminum structure
- White hardwall panels
- Corner booth with curved counter, 1 header sign & storage locker (not lockable)
- Carpet
- Installation and dismantle

Discount Rate:
\$4,717.60

Standard Rate:
\$6,132.90

☐ 8' x 20' ☐ 10' x 20'

HARDWALL UPGRADES & ACCESSORIES

Description	Qty.	Discount Rate	Standard Rate	Total
LOGO upgrade		Call for Quote		
Wall shelf, .25m deep x 1m long		93.40	121.40	
Angled shelf, .25m deep x 1m long		121.30	157.70	
15 watt grey LED arm light, (power NOT included)		126.70	164.70	
2m white curve counter WITH inside shelf (NO doors)		696.50	905.50	
White PVC slat wall, 2.5m high x 1m wide, per lin.m		248.90/m	323.60/m	

****CUSTOM BOOTHS AVAILABLE. Call 604 277 1726 for a quote****

EXHIBITOR INFORMATION

COMPANY

CONTACT

BOOTH#

CARPET COLOUR SELECTIONS

☐ Blue ☐ Red ☐ Grey / Granite ☐ Black
☐ Bluejay ☐ Tuxedo

HEADER DETAILS

HEADER TO READ (up to 20 characters, black lettering on white)

Header One

Header Two

****LOGO upgrade available at additional cost. Please contact Exhibitor Services for a quote.****

COST SUMMARY

RATE ADJUSTMENT	(OFFICE USE ONLY)	
25% CANCELLATION FEE	(OFFICE USE ONLY)	
SUBTOTAL		
P.S.T. 7%		
G.S.T. 5%		
TOTAL		

PLEASE REFER TO THE PAYMENT & CREDIT CARD CHARGE AUTHORIZATION FORM

****ORDERS WILL NOT BE PROCESSED WITHOUT PAYMENT****

STANDARD RATE will be applied to all orders not received and paid in full by **July 18, 2024**. We reserve the right to adjust orders calculated incorrectly.

A 25% CANCELLATION FEE will be applied to all orders received then cancelled. If full service has been provided then 100% of original fee will be applied. GST#R103315057

HARDWALL-RENTAL 2024.cdr

GRAPHICS & SIGN ORDER FORM & INVOICE

STANDARD SIGN SIZES

Quantity	Description	Discount Rate	Standard Rate	Total
	22" x 28"	120.10	156.10	
	28" x 44"	221.40	287.80	
	3' x 7' x 0.5" falconboard sign w/ plexi feet	972.70	1,264.50	

OPTIONAL SERVICES

Quantity	Description	Discount Rate	Standard Rate	Total
	Easel back on sign (Up to 22" x 28")	20.00	26.00	
	Logo sign	Quoted on Request		
	Banner	Quoted on Request		

DIGITAL GRAPHICS (6 SQ FT MINIMUM)

- Digital files must be provided to LSS specifications.
- Graphics should be sent in vector format as .eps files.
Also acceptable: Adobe Illustrator (.ai)
- Photographic & Pixel based complex graphics (Bitmap Files) must be **MINIMUM** 75 dpi at actual output size.
Acceptable formats include: .tif, .bmp, & .jpg, (flattened images)
- All text **MUST** be outlined / converted to curves (if vector files) and embedded fonts (if bitmap files)
- No bleed or crop marks on files (create files to exact dimensions)
- Art work is to be received as print ready.
- Editing & Design time is charged at a rate of \$104.75 per hour (1 hour minimum).
- Digital files must be received at least three (3) weeks before show to receive discount price.

Quantity	Description	Discount Rate	Standard Rate	Total
	Digital Prints per sq.ft.	34.50	44.90	
	Second side printing	Quoted on Request		



EXHIBITOR INFORMATION

COMPANY

CONTACT

BOOTH#

GRAPHIC ACCESSORIES

Quantity	Description	Discount Rate	Standard Rate	Total
	 Aluminum easel Fits sign sizes: 22" x 28" 24" x 36" 28" x 44"	104.00	135.00	
	 Chrome sign holder 22" x 28"	111.50	145.00	
	Fabric system hardware	Quoted on Request		

ADDITIONAL SERVICES & TERMS

If you would like us to provide more information and pricing on banners, logos, digital signs, special graphics or any other items please contact our Exhibitor Services Department for a complimentary consultation.

Orders required within 72 hours before show opening may be subject to a rush delivery charge. Please allow a minimum of 24 hours for any on-site sign orders.

COST SUMMARY

RATE ADJUSTMENT (OFFICE USE ONLY)	
100% CANCELLATION FEE (OFFICE USE ONLY)	
DIGITAL SET UP FEE	\$58.00
RUSH DELIVERY (IF NECESSARY)	
SUBTOTAL	
P.S.T. 7%	
G.S.T. 5%	
TOTAL GST#R103315057	

PLEASE REFER TO THE PAYMENT & CREDIT CARD CHARGE AUTHORIZATION FORM

****ORDERS WILL NOT BE PROCESSED WITHOUT PAYMENT****

STANDARD RATE will be applied to all orders not received and paid in full by **July 18, 2024**. We reserve the right to adjust orders calculated incorrectly.

A 100% CANCELLATION FEE will be applied to all orders received and then cancelled.

GRAPHICS - SIGN 2024.cdr

PLANT & FLOWER RENTAL ORDER FORM & INVOICE**LIVE PLANTS**

Quantity	Description	Discount Rate	Standard Rate	Total
	Potted flowers (seasonal)	79.50	103.40	
	Boston fern	97.70	127.00	
	Orchid in ceramic pot	140.70	182.90	

LIVE TROPICAL PLANTS

Quantity	Description	Discount Rate	Standard Rate	Total
	3' - 4' tall floor plant	143.00	185.90	
	4' - 5' tall floor plant	189.20	246.00	

COLOURFUL FRESH CUT FLOWERS

Quantity	Description	Discount Rate	Standard Rate	Total
	Small floral arrangement (seasonal)	232.60	302.40	
	Large floral arrangement (seasonal)	254.40	330.70	
	Custom floral arrangement	Quoted on Request		

Please indicate colour preference here, if any (subject to availability): _____

The above items are priced on a rental basis only. Price includes container, delivery, installation and removal at the end of show. Any items missing from the booth upon dismantling are the responsibility of the exhibitor and an additional charge will be applied.

SPECIAL INSTRUCTIONS**EXHIBITOR INFORMATION**

COMPANY

CONTACT

BOOTH#

COST SUMMARY

RATE ADJUSTMENT	(OFFICE USE ONLY)	
25% CANCELLATION FEE	(OFFICE USE ONLY)	
SUBTOTAL		
P.S.T. 7%		
G.S.T. 5%		
TOTAL	GST#R103315057	

PLEASE REFER TO THE PAYMENT & CREDIT CARD CHARGE AUTHORIZATION FORM****ORDERS WILL NOT BE PROCESSED WITHOUT PAYMENT****

STANDARD RATE will be applied to all orders not received and paid in full by **July 18, 2024**. We reserve the right to adjust orders calculated incorrectly.

A 25% CANCELLATION FEE will be applied to all orders received and then cancelled 3 weeks prior to install. If full service has been provided then 100% of original fee will be applied.

FLOWER 2024.cdr

AUDIO VISUAL & COMPUTER RENTAL ORDER FORM & INVOICE

MONITORS & STANDS	QTY	DISCOUNT RATE PER DAY	STANDARD RATE PER DAY (max at 3 days)	# OF DAYS	TOTAL
40" LED Display (16:9) - Includes speakers, Smart TV USB capable		\$538.10	\$699.50		
43" 4K LED Display (16:9) - Includes speakers, Smart TV USB capable		\$558.90	\$726.60		
55" LED Display (16:9) - Includes speakers, Smart TV USB capable		\$819.60	\$1,065.50		
55" 4K LED Display (16:9) - Includes speakers, Smart TV USB capable		\$819.60	\$1,065.50		
70" LCD Display (16:9) - Includes speakers, Smart TV USB capable		\$1,043.30	\$1,356.20		
80" LED Display (16:9) - Includes speakers, Smart TV USB capable (stand included)		\$ UPON REQUEST			
FLOOR STANDS ARE ONLY COMPATIBLE WITH OUR RENTAL MONITORS					
Flat Monitor Floor Stand		\$114.50	\$148.90		
Flat Monitor Floor Stand w/ shelf		\$138.90	\$180.60		

If no floor stand is required, please indicate how your monitor will be displayed:

☐ Mounted to booth hardwall system (\$450.00/mounting bracket) ☐ Placed on a counter or table

Will your monitor require any of the following?

☐ HDMI Cable ☐ USB

COMPUTER & AUDIO	QTY	DISCOUNT RATE PER DAY	STANDARD RATE PER DAY (max at 3 days)	# OF DAYS	TOTAL
Laptop - I7 2.3G W7 OFFICE2010 (16:9)		\$460.30	\$598.40		
Wireless PPT Remote/Mouse		\$85.00	\$110.50		
Booth Audio System w/ one wireless handheld mic, one mixer/amp, two speakers on stands		\$477.30	\$620.50		
UHF wireless microphone <input type="checkbox"/> Handheld <input type="checkbox"/> Headset <input type="checkbox"/> Lavalier		\$246.00	\$319.80		

SPECIAL INSTRUCTIONS (please list any cords you may require):

RENTAL AGREEMENT

1. Please submit payment in full with your order.
2. The rented equipment will be delivered and installed in your booth towards the end of your move-in time.
3. The equipment is the exhibitor's responsibility until picked up by a Levy Show Service Inc. representative. DO NOT leave equipment unattended in the exhibit booth once the show closes.

SUPPLEMENTARY CONDITIONS

INSURANCE - Insurance for the full replacement value of the equipment rented is the responsibility of the customer.

SOFTWARE - The customer agrees to be bound by all applicable license and copyright laws of any of the software on this equipment.

GUARANTEES & RESPONSIBILITY LIMITATION - Levy Show Service Inc. is not responsible for software issues and will charge the customer should Levy Show Service Inc. respond to problems caused by the customer's software.

INSTALL / DISMANTLE & TRANSPORTATION LABOUR CHARGES

Basic installation cost for one item is **\$467.50**

Multiple items ordered will require a custom installation and dismantle quote. Please contact our Operations Department to obtain a quote.

EXHIBITOR INFORMATION

COMPANY

CONTACT

BOOTH#

COST SUMMARY

RATE ADJUSTMENT	(OFFICE USE ONLY)	
25% CANCELLATION FEE	(OFFICE USE ONLY)	
SUBTOTAL		
CABLES & CONSUMABLES (+15.0% on equipment)		
SPECIAL INSTALLATION CHARGES (on request)		
Basic Installation & Transportation Charges per item		
P.S.T. 7%		
G.S.T. 5%		
TOTAL	GST#R103315057	

PLEASE REFER TO THE PAYMENT & CREDIT CARD CHARGE AUTHORIZATION FORM

****ORDERS WILL NOT BE PROCESSED WITHOUT PAYMENT****

STANDARD RATE will be applied to all orders not received and paid in full by **July 18, 2024**. We reserve the right to adjust orders calculated incorrectly.

A 25% CANCELLATION FEE will be applied to all orders received and then cancelled 3 weeks prior to install. If full service has been provided then 100% of original fee will be applied.

LABOUR ORDER FORM & INVOICE

LEVY SHOW SERVICE INC. SUPERVISED LABOUR

☐ MOVE IN ☐ MOVE OUT

LEVY SHOW SERVICE INC. WILL SUPERVISE labour to unpack and install display before exhibitor arrival at show site and/or dismantle and pack display after show closing.

A 25% (\$35.00 minimum) Surcharge will be added to the labour rates below for this professional supervision.

EXHIBITOR SUPERVISED LABOUR

☐ MOVE IN ☐ MOVE OUT

EXHIBITOR WILL SUPERVISE the labourers provided by Levy Show Service Inc. for the installation and/or dismantle of the exhibit.

Supervisor's Name: _____

Contact Information: _____

Labour will be tentatively scheduled as per your indicated start time below. Please note that you will need to check in with our Levy Customer Service Desk on-site to advise that you are ready for your labourer(s) to begin.

LABOUR RATES

REGULAR TIME	8:00 AM - 4:00 PM Monday to Friday	130.00 per Hour
OVER TIME	4:00 PM - 6:00 PM Monday to Friday 8:00 AM - 4:00 PM Saturday	175.00 per Hour
DOUBLE TIME	All other hours including Sundays and Statutory Holidays	224.00 per Hour

ESTIMATED INSTALLATION REQUIREMENTS

REGULAR TIME	_____ Labourers	_____ Hours	130.00 per Hour	\$_____ Total	A minimum charge for labour is one (1) hour per labourer. Labour thereafter is charged in one-half (½) hour increments. Date Required _____ Start Time _____
OVER TIME	_____ Labourers	_____ Hours	175.00 per Hour	\$_____ Total	
DOUBLE TIME	_____ Labourers	_____ Hours	224.00 per Hour	\$_____ Total	

A 25% (\$35.00 min.) surcharge will be added to labour rates for Levy Supervision

PLEASE NOTE: installation labour can start no earlier than 30 - 60 minutes after show close

ESTIMATED DISMANTLE REQUIREMENTS

REGULAR TIME	_____ Labourers	_____ Hours	130.00 per Hour	\$_____ Total	A minimum charge for labour is one (1) hour per labourer. Labour thereafter is charged in one-half (½) hour increments. Date Required _____ Start Time _____
OVER TIME	_____ Labourers	_____ Hours	175.00 per Hour	\$_____ Total	
DOUBLE TIME	_____ Labourers	_____ Hours	224.00 per Hour	\$_____ Total	

A 25% (\$35.00 min.) surcharge will be added to labour rates for Levy Supervision

PLEASE NOTE: installation labour can start no earlier than 30 - 60 minutes after show close

****PLEASE ADD 25% FOR ORDERS PLACED AFTER JULY 18, 2024****

INBOUND FREIGHT INFORMATION

Carrier	Date Shipped
Number of Pieces	Weight
Pro Number	Arrival Date (Target)
<input type="checkbox"/> Loose Display	<input type="checkbox"/> Crated Display

QUANTITY OF LADDERS REQUIRED (Optional)

_____ (indicate number)

EXHIBITOR INFORMATION

COMPANY

CONTACT

BOOTH#

SPECIAL SET UP INSTRUCTIONS

Please include set up plans, photos and install instructions for booth labour ordered.

Are set up plans attached? ☐ Yes ☐ No

If no, please provide an email address for Levy to contact you regarding booth set up and special requirements:

COST SUMMARY

RATE ADJUSTMENT	(OFFICE USE ONLY)	
CANCELLATION FEE	(OFFICE USE ONLY)	
TOTAL ESTIMATED LABOUR		
SUPERVISION 25% (\$35.00 min.)		
ADDITIONAL 25% LATE ORDER		
SUBTOTAL		
P.S.T. 7%		
G.S.T. 5%		
TOTAL	GST #R103315057	

PLEASE REFER TO THE PAYMENT & CREDIT CARD CHARGE AUTHORIZATION FORM

****ORDERS WILL NOT BE PROCESSED WITHOUT PAYMENT****

TERMS & CONDITIONS Gratuities in any form, including cash, gifts or labour hours for work not actually performed are prohibited. We reserve the right to adjust orders calculated incorrectly.

CANCELLATION FEE A one (1) hour "per person, per hour" charge will be applied for all cancelled labour orders.

PAYMENT & LABOUR

The terms and conditions set forth below become part of the contractual agreement between Levy Show Service Inc and you, the EXHIBITOR. Acceptance of said terms and conditions will be construed when any of the following conditions are met:

- ~ **WHEN THE METHOD OF PAYMENT FORM IS SIGNED; OR**
- ~ **WHEN AN ORDER FOR LABOUR, SERVICES, AND/OR RENTAL EQUIPMENT IS PLACED BY AN EXHIBITOR WITH LEVY SHOW SERVICE INC.; OR**
- ~ **WHEN WORK IS PERFORMED ON BEHALF OF EXHIBITOR BY LABOUR SECURED THROUGH LEVY SHOW SERVICE INC.**

DEFINITIONS

"Levy Show Service Inc" ("LSS"), and any sub-contractors affiliated within the show. The term EXHIBITOR shall be construed within the meaning of this contract as the EXHIBITOR and/or its employees, agents, representatives, and/or any Exhibitor Appointed Contractor (E.A.C.).

PAYMENT TERMS

Full payment, including any applicable tax, is due in advance or at show site. All payments must be in CDN. or U.S. Funds and all cheques must be drawn on a Canadian or U.S. Bank. Orders received without advance payment or after the deadline date will incur additional [After Deadline] charges as indicated on each order form. All materials and equipment are on a rental basis for the duration of the show or event and remain the property of LSS except where specifically identified as a sale. All LSS rentals include delivery, installation and removal from EXHIBITOR's booth, unless stated otherwise. In case of cancellation, a one-hour "per person, per hour" charge will be applied to all labour, forklift and sign hanging orders that are not canceled in writing at least seven (7) days prior to the scheduled start time. If services have already been provided at the time of cancellation 100% of original fee will be applied. It is the EXHIBITOR'S responsibility to advise LSS Exhibitor Services personnel of any problem with any order, and to check invoices for accuracy prior to the close of the exhibit. If EXHIBITOR is exempt from payment of sales tax, LSS requires a British Columbia or Federal tax exemption number. For EXHIBITORS, LSS requires 100% prepayment of advance orders, and any orders or services placed at show site must be paid at the show. For all others, should there be any pre-approved unpaid balance after the close of the show, terms will be net, due and payable in CANADA, upon receipt of invoice. In the event of any dispute between EXHIBITOR and LSS relative to any loss, damage, or claim, such EXHIBITOR shall not be entitled to and shall not withhold payment, or any partial payment, or any partial payment, due to LSS relative to any services, as an offset against the amount of any alleged loss or damage. Any claim against LSS shall be considered a separate transaction, and shall be resolved on its own merits. LSS reserves the right to charge EXHIBITOR for the difference between the EXHIBITOR's estimate of charges and the actual charges incurred by the EXHIBITOR, or for any charges that LSS may be obligated to pay on behalf of the EXHIBITOR, including without limitation, any shipping charges.

LABOUR PROVIDED UNDER THE SUPERVISION OF LSS

RESPONSIBILITIES

LSS shall be responsible for the performance of labour provided under this option. LSS cannot assume responsibility for any acts of, or loss to, persons, parties and/or other contracting firms not under LSS's direct supervision and control. In no event shall LSS be liable for loss or damage caused by delay in labour beginning work when EXHIBITOR requests labour to begin later than the start of the working day. LSS shall not be responsible for loss, delay or damage due to strike, lockouts, and/or work stoppages, or other causes beyond LSS's reasonable control.

INDEMNIFICATION

LSS agrees to indemnify, hold harmless, and defend EXHIBITOR from and against any and all demands, claims, causes of action, fines, penalties, damages, liabilities, judgments, and expenses (including but not limited to reasonable attorneys' fees and investigation costs) for bodily injury, including any injury to LSS employees, or property damage arising out of work performed by labour provided by and supervised by LSS, except when EXHIBITOR exercises direction and/or control over the work being performed.

LABOUR PROVIDED UNDER THE SUPERVISION OF EXHIBITOR

RESPONSIBILITIES

EXHIBITOR shall be responsible for the performance of labour provided under this section. It is responsibility of EXHIBITOR to supervise labour secured through LSS in a reasonable manner as to prevent bodily injury and/or property damage and also to direct them to work in a manner that is in compliance with LSS Safe Work Rules and/or Federal, Province and Local ordinances, rules and/or regulations, including but not limited to Show or Facility Management Rules and/or Regulations. It is the responsibility of the EXHIBITOR to check in with the Service Desk to pick up labour, and to return to the Service Desk to release labour when the work is completed.

INDEMNIFICATION

EXHIBITOR agrees to indemnify, hold harmless, and defend LSS from and against any and all demands, claims, causes of action, fines, penalties, damages, liabilities, judgments, and expenses (including but not limited to reasonable attorneys' fees and investigation costs) for bodily injury, including any injury to LSS employees, and/or property damage arising out of work performed by labor provided by LSS but supervised by EXHIBITOR. Further, EXHIBITOR's indemnification of LSS includes any and all violations of Federal, Province or Local ordinances, "Show Regulations and/or Rules" as published and/or set forth by Facility or Show Management, and/or directing labour provided by LSS to work in a manner that violates any of the above rules, regulations, and/or ordinances.

IMPORTANT

PLEASE REFER TO LSS's MATERIAL HANDLING TERMS AND CONDITIONS FORM AS THEY RELATE TO MATERIAL HANDLING SERVICES. CONTRACTUAL TERMS DEPEND ON THE NATURE OF SERVICES SECURED BY EXHIBITOR THROUGH LSS. TERMS & CONDITIONS MAY VARY FOR EACH TYPE OF SERVICE ORDERED THROUGH LSS.

TERMS & CONDITIONS

